

T25 HIGH SPEED ROTARY TORQUE TRANSDUCER (U.S. & METRIC)

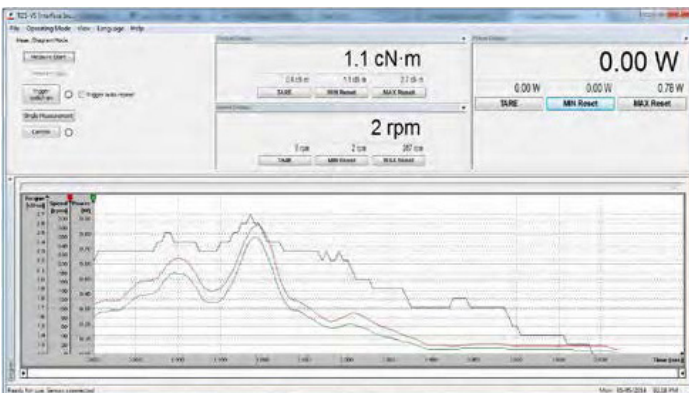
FEATURES & BENEFITS

- Capacities from 0.1 Nm to 5K Nm (0.885 to 44.3K lbf-in)
- 0.1% combined error
- Speed up to 30K RPM
- Unique design eliminates RPM dependent bearing friction effects
- Foot or float mount
- Remote activated on-shaft shunt calibration
- ±5VDC output
- 12-28 VDC supply
- Contactless data transmission
- Digital electronics
- 10 kHz sample rate
- 16-bit resolution

OPTIONS

- ±0.05% combined error
- Encoder for speed/angle measurement
- Keyed shaft per DIN 6885.1
- Right angle mating connector or cable assembly
- ±10 VDC output
- RS485 output
- USB output – includes encoder option and display graphing and logging software (replaces ±5V output)
- USB Option Available

SOFTWARE FOR USB OPTION



STANDARD CONFIGURATION

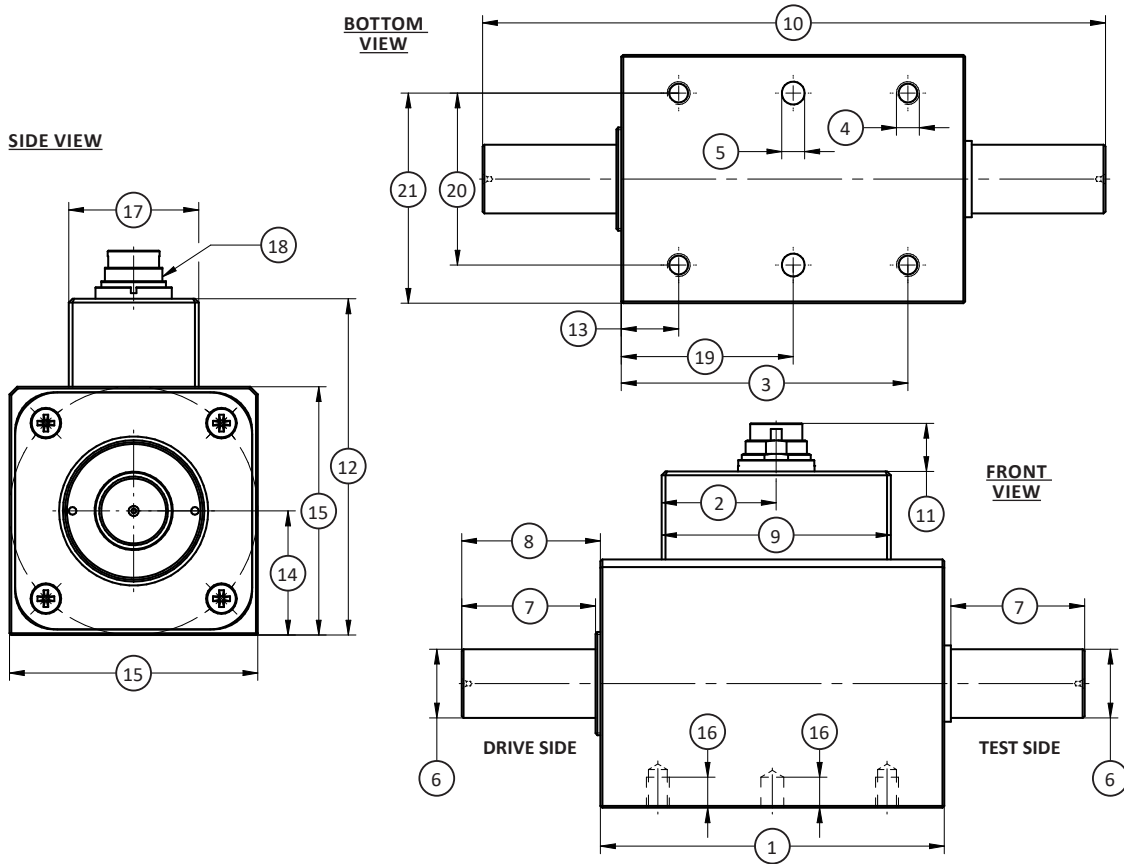


Model T25 (Shown)

SPECIFICATIONS

ACCURACY - (MAX ERROR)		
Combined Error – %FS		±0.1
Nonrepeatability – %RO		±0.02
Resolution – bit		16
TEMPERATURE		
Effect on Zero – %RO	°C	±0.02
	°F	±0.01
Effect on Output – %	°C	±0.01
	°F	±0.006
Compensated Range	°C	+5 to +45
	°F	+41 to +113
Operating Range	°C	0 to +60
	°F	+32 to +140
Storage Range	°C	-10 to +70
	°F	+14 to +158
ELECTRICAL		
Supply Voltage – VDC		+12 to +28
Supply Current – mA		≤60
Output – VDC		±5
Bandwidth – kHz – dB		1, 3
Sample Rate – kHz		10
Calibration Signal – %FS		100
Electrical Connection	12-pin binder series 581 (includes mate)	
Encoder Option	360 pulse/rev, 2-track, +5V TTL, 90° offset, quadrature encoder	
MECHANICAL		
Safe Overload – %RO		200
Max Speed – RPM		Varies with capacity (see table)
Shaft Material		Alloy Steel
Housing Material		Aluminum
Level of Protection		IP 50

T25 HIGH SPEED ROTARY TORQUE TRANSDUCER (U.S. & METRIC)



DIMENSIONS

Parameters	NOMINAL TORQUE											
	Metric (Nm)	U.S. (lbf-in)	Metric (Nm)	U.S. (lbf-in)	Metric (Nm)	U.S. (lbf-in)	Metric (Nm)	U.S. (lbf-in)	Metric (Nm)	U.S. (lbf-in)	Metric (Nm)	U.S. (lbf-in)
	0.1, 0.2, 0.5, 1, 2, 5	0.885, 1.77, 4.43, 8.85, 17.7, 44.3	10	88.5	20, 30, 50, 100	177, 266, 443, 885	200, 500	1770, 4425	1K	8.85K	2K, 5K	17.7K, 44.3K
	mm	in	mm	in	mm	in	mm	in	mm	in	mm	in
(1)	71	2.8	71	2.8	90	3.5	120	4.7	120	4.7	144	5.7
(2)	30	1.2	30	1.2	30	1.2	30	1.2	30	1.2	30	1.2
(3)	59	2.3	59	2.3	75	3.0	10	0.4	10	0.4	119	4.7
(4)	M4		M4		M6		M8		M8		M12	
(5)	∅4 H7	∅(0.1580 / 0.1575)	∅4 H7	∅(0.1580 / 0.1575)	∅6 H7	∅(0.2367 / 0.2362)	∅8 H7	∅(0.3156 / 0.3150)	∅8H7	∅(0.3156 / 0.3150)	∅12 H7	∅(0.4731 / 0.4724)
(6)	∅8 g6	∅(0.3148 / 0.3144)	∅10 g6	∅(0.3935 / 0.3931)	∅18 g6	∅(0.7084 / 0.7080)	∅32 g6	∅(1.2595 / 1.2589)	∅42 g6	∅(1.6532 / 1.6526)	∅70 g6	∅(2.7555 / 2.7548)
(7)	16.5	0.65	16.5	0.65	35	1.4	55	2.2	55	2.2	110	4.3
(8)	19	0.7	19	0.7	35.5	1.40	56.5	2.22	56.5	2.22	114	4.5
(9)	60	2.4	60	2.4	60	2.4	60	2.4	60	2.4	60	2.4
(10)	110	4.3	110	4.3	163	6.4	234	9.2	234	9.2	372	14.6
(11)	13	0.5	13	0.5	13	0.5	13	0.5	13	0.5	13	0.5
(12)	63	2.5	63	2.5	88	3.5	118	4.6	118	4.6	163	6.4
(13)	12	0.5	12	0.5	15	0.6	20	0.8	20	0.8	25	1.0

* U.S. dimensions and capacities are provided for conversion only. Standard product will be sold in kN and Metric dimensions. U.S. capacities available upon special request and at an additional cost.

T25 HIGH SPEED ROTARY TORQUE TRANSDUCER (U.S. & METRIC)

DIMENSIONS (CONTINUED)

Parameters	NOMINAL TORQUE											
	Metric (Nm)	U.S. (lbf-in)	Metric (Nm)	U.S. (lbf-in)	Metric (Nm)	U.S. (lbf-in)	Metric (Nm)	U.S. (lbf-in)	Metric (Nm)	U.S. (lbf-in)	Metric (Nm)	U.S. (lbf-in)
	mm	in	mm	in	mm	in	mm	in	mm	in	mm	in
	0.1, 0.2, 0.5, 1, 2, 5	0.89, 1.77, 4.43, 8.85, 17.7, 44.3	10	88.5	20, 30, 50, 100	177, 266, 443, 885	200, 500	1770, 4425	1K	8.85K	2K, 5K	17.7K, 44.3K
(14)	20 ^{±0.05}	0.8 ^{±0.002}	20 ^{±0.05}	0.8 ^{±0.002}	32.5 ^{±0.05}	1.28 ^{±0.002}	47.5 ^{±0.05}	1.87 ^{±0.002}	47.5 ^{±0.05}	1.87 ^{±0.002}	70 ^{±0.05}	2.8 ^{±0.002}
(15)	40	1.6	40	1.6	65	2.6	95	3.7	95	3.7	140	5.5
(16)	8	0.3	8	0.3	8	0.3	14	0.6	14	0.6	20	0.8
(17)	34	1.3	34	1.3	34	1.3	34	1.3	34	1.3	34	1.3
(18)	12-pin connector		12-pin connector		12-pin connector		12-pin connector		12-pin connector		12-pin connector	
(19)	35.5 ^{±0.05}	1.40 ^{±0.002}	35.5 ^{±0.05}	1.40 ^{±0.002}	45 ^{±0.05}	1.8 ^{±0.002}	60 ^{±0.05}	2.4 ^{±0.002}	60 ^{±0.05}	2.4 ^{±0.002}	72 ^{±0.05}	2.8 ^{±0.002}
(20)	30	1.2	30	1.2	45	1.8	70	2.8	70	2.8	100	3.9
(21)	35	1.4	35	1.4	55	2.3	82.5	3.25	82.5	3.25	120	4.7

PERFORMANCE PARAMETERS

CAPACITY		WEIGHT		MAX RPM	SPRING RATE	MOMENT OF INERTIA (kg•m ²)		MAX THRUST LOAD**		MAX SHEAR FORCE**	
(Nm)	(lbf-in)	(kg)	lbs			(NM/rad)	Drive Side	Test Side	(N)	(lbf)	(N)
0.1	0.89	0.5	1.10	30,000	1.8x10 ¹	9.2x10 ⁻⁶	2.5x10 ⁻⁷	43	10.0	1.5	0.34
0.2	1.77	0.5	1.10	30,000	1.8x10 ¹	9.2x10 ⁻⁶	2.5x10 ⁻⁷	58	13.0	2	0.4
0.5	4.43	0.5	1.10	30,000	9.4x10 ¹	9.2x10 ⁻⁶	2.5x10 ⁻⁷	240	54.0	3	0.7
1	8.85	0.5	1.10	30,000	9.4x10 ¹	9.2x10 ⁻⁶	2.5x10 ⁻⁷	240	54.0	3	0.7
2	17.7	0.5	1.10	30,000	3.7x10 ²	9.2x10 ⁻⁶	2.5x10 ⁻⁷	480	108	7	1.6
5	44.3	0.5	1.10	30,000	7.7x10 ²	9.2x10 ⁻⁶	2.6x10 ⁻⁷	900	202	16.5	3.71
10	88.5	0.6	1.32	30,000	8.8x10 ²	9.3x10 ⁻⁶	3.4x10 ⁻⁷	1.05K	236	21	4.7
20	177	1.6	3.53	20,000	5.1x10 ³	1.2x10 ⁻⁴	6.8x10 ⁻⁶	2.3K	517	44	9.9
30	266	1.6	3.53	20,000	5.1x10 ³	1.2x10 ⁻⁴	6.8x10 ⁻⁶	2.3K	517	44	9.9
50	443	1.6	3.53	20,000	9.6x10 ³	1.2x10 ⁻⁴	7.4x10 ⁻⁶	5K	1.12K	142	31.9
100	885	1.6	3.53	20,000	9.6x10 ³	1.2x10 ⁻⁴	7.4x10 ⁻⁶	5K	1.12K	142	31.9
200	1.77K	4.8	10.58	15,000	8.9x10 ⁴	5.4x10 ⁻⁴	4.4x10 ⁻⁴	10K	2.25K	275	61.8
500	4.43K	4.8	10.58	15,000	1.3x10 ⁵	5.4x10 ⁻⁴	4.4x10 ⁻⁴	13K	2.92K	400	89.9
1K	8.85K	5.6	12.35	15,000	1.7x10 ⁵	6.4x10 ⁻⁴	5.3x10 ⁻⁴	20K	4.5K	920	207
2K	17.7K	19.0	41.89	12,000	6.3x10 ⁵	5.7x10 ⁻³	5.1x10 ⁻³	34K	7.64K	1.25K	281
5K	44.3K	19.0	41.89	12,000	9.6x10 ⁵	5.8x10 ⁻³	5.2x10 ⁻³	64K	14.4K	2.9K	652

T25 HIGH SPEED ROTARY TORQUE TRANSDUCER (U.S. & METRIC)

ELECTRICAL CONNECTION

Pin	12-PIN ELECTRICAL CONNECTION		12-Pin RS485 Option	
	Function	Description	Function	Description
A	NC	-	NC	-
B	Option Angle B	TTL	Option Angle B	TTL
C	Signal (+)	±5 VDC (±10 VDC)	NC	-
D	Signal (GND)	0 VDC	NC	-
E	Supply (GND)	0 VDC, TTL	Supply (GND)	0 VDC
F	Supply (+)	12-28 V	Supply (+)	12-28 VDC
G	Option Angle A	TTL	Option Angle A	TTL
H	NC	-	NC	-
J	NC	-	RS485 Option	RS485 (B)
K	Cal, Control	L <2.0 V/H> 3.5 V	NC	-
L	NC	-	RS485 Option	RS485 (A)
M	Housing	-	Housing	-

*** Allowable without significant effect on measurement and applies to unsupported shaft only*