

## LWPF1 PRESS FORCE LOAD CELL (U.S. & METRIC)

### FEATURES & BENEFITS

- Capacities from 2 to 100 kN (450 to 22.5K lbf)
- Short height
- Large thru-hole
- For press-force monitoring

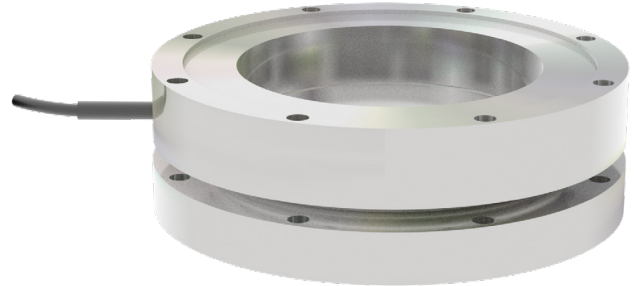
### SPECIFICATIONS

ACCURACY – (MAX ERROR)		
Nonlinearity – %FS		±0.5
Hysteresis – %FS		±0.5
Nonrepeatability – %RO		±0.1
Creep, in 30 min – %		±0.1
TEMPERATURE		
Effect on Zero – %RO / deg	°C	±0.02
Effect on Output – % / deg	°C	±0.02
Compensated Range	°C	0 to +60
	°F	+32 to +140
Operating Range	°C	-10 to +70
	°F	+14 to +158
ELECTRICAL		
Output – mV/V		1 ±20%
Excitation Voltage – VDC		2 - 12
Bridge Resistance – Ohm		700
Electrical Connection – Cable	m	3
	ft	10
MECHANICAL		
Safe Overload – %RO		150
Deflection at Rated Capacity	mm	< 0.15
	in	< 0.006
IP Rating		IP60
Material		Stainless steel / Aluminum

### OPTIONS

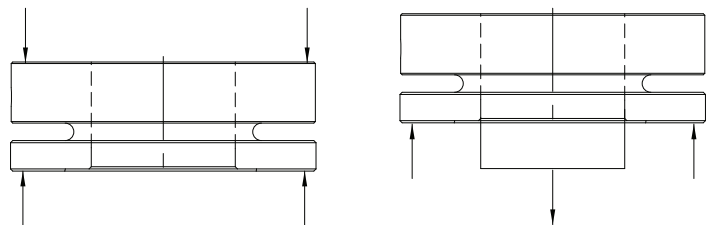
- Extended temperature range (-40 to +150°C or -40 to +302°F)
- Internal shunt resistor – 100% output

### STANDARD CONFIGURATION



Model LWPF1 (Shown)

### LOADING DIAGRAM

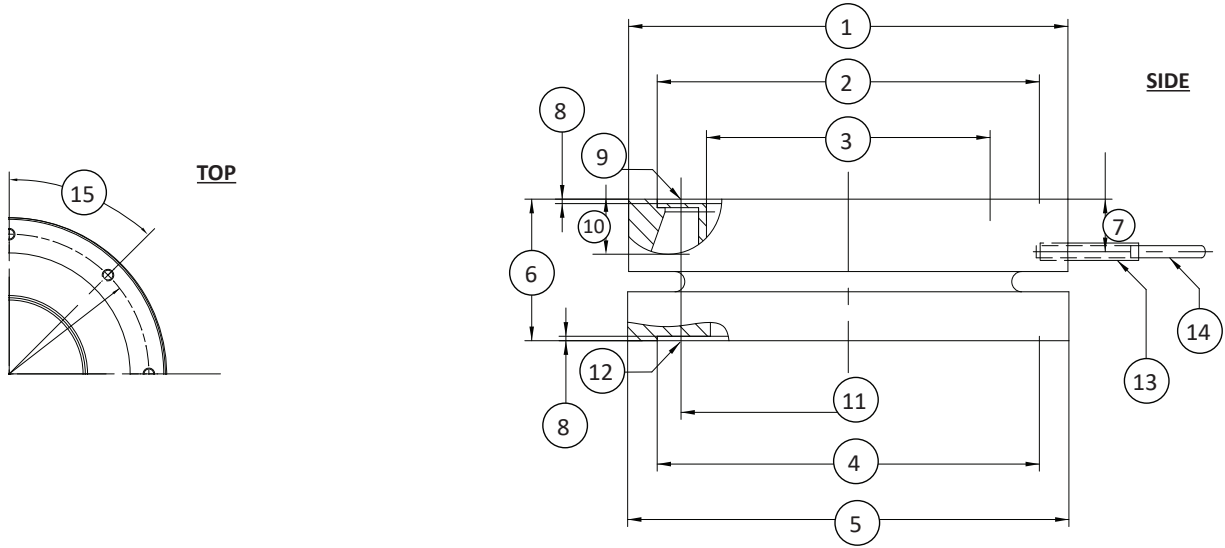


Compression

Tension

Note: Loading on this transducer must take place through connections with the mounting holes

## LWPF1 PRESS FORCE LOAD CELL (U.S. & METRIC)



### DIMENSIONS

See Drawing	CAPACITY			
	Metric (kN)	U.S. (lbf)	Metric (kN)	U.S. (lbf)
	2, 5, 10, 20	450, 1.12K, 2.25K, 4.5K	50, 100	11.2K, 22.5K
	mm	in	mm	in
(1)	69.7	2.74	111.5	4.39
(2)	54	2.1	97	3.8
(3)	33	1.3	70	2.8
(4)	54	2.1	97	3.8
(5)	70g6	(2.7555/2.7548)	112g6	(4.4090/4.4081)
(6)	25	1.0	35	1.4
(7)	9	0.4	13	0.5
(8)	0.5	0.02	1.1	0.04
(9)	M5, 8 x 45°		M6, 8 x 45°	
(10)	5	0.2	6	0.2
(11)	62	2.4	104	4.1
(12)	M5, 8 x 45°		M6, 8 x 45°	
(13)	18 <sup>±0.1</sup>	0.7 <sup>±0.1</sup>	18 <sup>±0.1</sup>	0.7 <sup>±0.1</sup>
(14)	Ø3.2	Ø0.13	Ø3.2	Ø0.13
(15)	45°		45°	