

## LWHP14 LOAD WASHER (U.S. & METRIC)

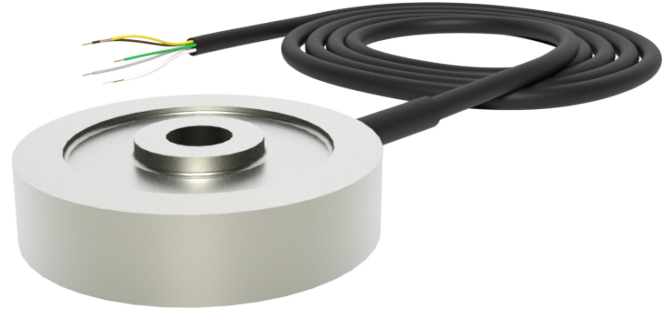
### FEATURES & BENEFITS

- Capacities from 0.05 to 100 kN (11.2 to 22.5K lbf)
- Ideal for applications requiring a thru-hole

### OPTIONS

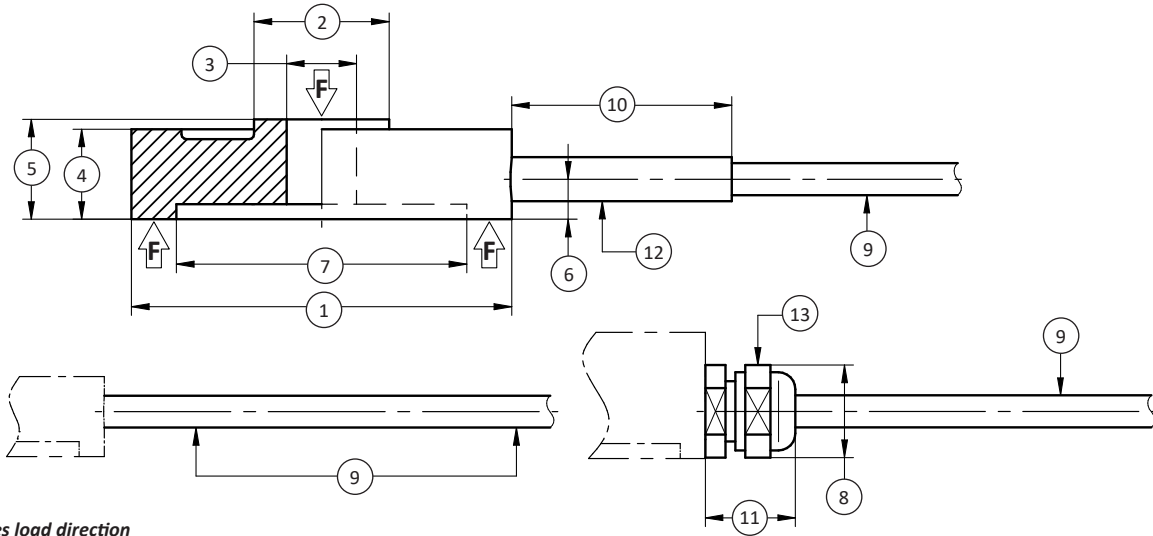
- Cable length
- Standardized output
- Add connector to cable
- Custom calibration
- Special temperature range
- 100% control signal (internal shunt calibration)
- Transducer Electronic Data Sheet (TEDS)

### STANDARD CONFIGURATION



Model LWHP14-5kN (Shown)

#### SIDE VIEW



Notes: F indicates load direction

### DIMENSIONS

See Drawing	CAPACITY							
	Metric (kN)	U.S. (lbf)	Metric (kN)	U.S. (lbf)	Metric (kN)	U.S. (lbf)	Metric (kN)	U.S. (lbf)
	0.05, 0.1, 0.2, 0.5	11.2, 22.5, 45, 112	1, 2, 5, 10	225, 450, 1.12K, 2.25K	20, 50	4.5 K, 11.2K	100	22.5K
	mm	in	mm	in	mm	in	mm	in
1	Ø30	Ø1.2	Ø38	Ø1.5	Ø49	Ø1.9	Ø78	Ø3.1
2	Ø9.0	Ø0.35	Ø13.5	Ø0.53	Ø23	Ø0.9	Ø42	Ø1.7
3	Ø5.2	Ø0.20	Ø7	Ø0.3	Ø14	Ø0.6	Ø27	Ø1.1
4	8	0.3	9	0.4	15	0.6	24	0.9
5	9.5	0.37	10	0.4	16	0.6	25	1.0
6	4.5	0.18	4.0	0.16	4.5	0.18	7.5	0.30
7	Ø25.0	Ø0.98	Ø29.0	Ø1.14	Ø41.0	Ø1.61	Ø60.0	Ø2.36
8	Ø10.0	Ø0.4	Ø10.0	Ø0.4	Ø10.0	Ø0.4	Ø10.0	Ø0.4
9	Ø3.2	Ø0.13	Ø3.2	Ø0.13	Ø3.2	Ø0.13	Ø3.2	Ø0.13
10	22.0	0.9	22.0	0.9	22.0	0.9	22.0	0.9
11	9.0	0.4	9.0	0.4	9.0	0.4	9.0	0.4
12	X	X	X	X				
13					X	X	X	X

U.S. dimensions and capacities are provided for conversion only. Standard products have International System of Units (SI) capacities and dimensions.

## LWHP14 LOAD WASHER (U.S. & METRIC)

### SPECIFICATIONS

CAPACITY		Metric (kN)	U.S. (lbf)	Metric (kN)	U.S. (lbf)	Metric (kN)	U.S. (lbf)	Metric (kN)	U.S. (lbf)	
		0.05, 0.1, 0.2, 0.5	11.2, 22.5, 45, 112	1, 2, 5, 10	225, 450, 1.12K, 2.25K	20, 50	4.5K, 11.2K	100	22.5K	
<b>ACCURACY – (MAX ERROR)</b>										
Nonlinearity – %FS										±0.5
Hysteresis – %FS										±0.5
Nonrepeatability – %RO										±0.2
Creep, in 30 min – %										±1
<b>TEMPERATURE</b>										
Effect on Zero – %RO / deg	°C									±0.02
Effect on Output – % / deg	°C									±0.02
Compensated Range	°C									0 to +60
	°F									+32 to +140
Operating Range	°C									-10 to +70
	°F									+14 to +158
<b>ELECTRICAL</b>										
Output – mV/V ± %										1 ± 20
Excitation Voltage – VDC										2 - 12
Bridge Resistance – Ohm										350
<b>MECHANICAL</b>										
Safe Overload – %RO										150
Deflection at Rated Capacity	mm									< 0.15
	in									< 0.006
IP Rating										IP60
Weight	kg	0.2		0.2		0.3		0.8		
	lbs	0.44		0.44		0.66		1.76		
Material										Stainless steel