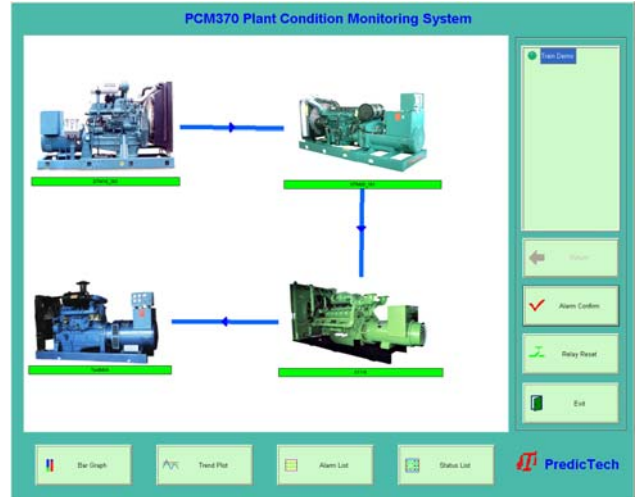




PCM370 Plant Condition Management System

Introduction

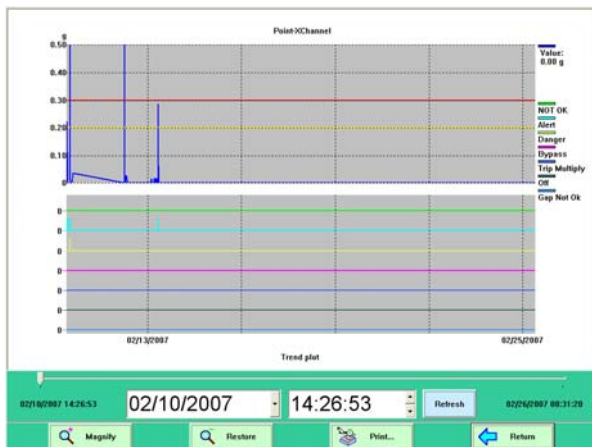
The PCM370 plant condition management system collects, stores, analyzes and distributes machinery status monitoring information to a local network or wide area network (over the Internet). The PCM370 obtains status data of critical machinery as well as balance of plant equipment. All of Pro vibTech's digital monitoring systems are quickly and easily integrated into the PCM370 system, as well as devices from other manufacturers which communicate via Modbus. Besides the vibration monitoring data, the PCM370 is also capable of collecting numerous process variables such as voltage inputs, current inputs, RTDs, thermocouples, discrete inputs and Modbus.



PCM370 Features

- ✓ **Integrates all of machine running monitoring data into one system**
- ✓ **Measures static variables and processing variables***
- ✓ **Integrates process inputs**
- ✓ **User friendly system with touch panel**
- ✓ **Pro vibTech's database**
- ✓ **Software alarms used for indication of machine status**
- ✓ **Data collection done automatically or with alarm**
- ✓ **Modbus data collection and storage**

* waveform and spectrum information are not available.



PCM370 CFG System Configuration Software

Automatic configuration:

All Pro vibTech's digital monitors can be automatically configured by the PCM370. Only a couple clicks of the mouse to setup.

- ✓ DTM
- ✓ PT2060
- ✓ PT580
- ✓ DM
- ✓ PT371

Ability to interface with other devices which have Modbus interface:

Any other manufacturers' Modbus device can integrate with the PCM370. Status and running data are configured according to user requirements.

Machine graphical interface:

The PCM370 provides a library of machine photos or user may import images which can be used for the machine status display.

The following are configurable:

- Data mapping by machines:
- Trend – history (chart list recorder)
- Trend – real-time
- Alarms with PT373 mapping
- 4-20mA with PT372 mapping
- Software program runs on PCM-TOUCH or any standard PC



PCM370 Software

The user interface that displays the machine condition graphs is included in the PCM370 Software. Data is obtained from ProvibTech's database.

Hardware interface:

- ✓ ProvibTech's digital monitors (Modbus RTU)
- ✓ Other manufacturers' equipment (Modbus RTU capable devices)
- ✓ RTU, thermocouple inputs
- ✓ Current and voltage inputs
- ✓ Discrete inputs/ relays

Standard condition monitoring plot:

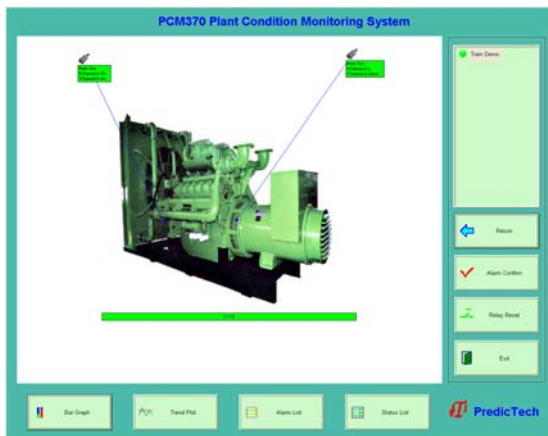
- ✓ Machine-train graphical interface with real-time status
- ✓ Machine graphical interface with real-time measurement point overall and status
- ✓ Trend plot of history data with single or multiple points (up to 100 per data series)
- ✓ Real-time alarms, alarm list
- ✓ Real-time overall vibration and status table view
- ✓ Bar graph of 8, 16 and 32 channels
- ✓ Real-time trend plot, simulate recorder
- ✓ Print any viewing window

Measurement range:

- Acceleration (pk or RMS): 0 - 20g
- Velocity (pk or RMS): 0 - 200 mm/sec (0 - 8 in/sec)
- Displacement (pk-pk): 0 - 100 mm (0 - 4 in)

Units of measurement:

- Peak
- Peak to peak
- RMS
- Average



Alarm Time	Channel Name	Alarm Status	Measur. Value	Alert Low	Changer Low	Alert High	Changer High
2007-01-31 23:40:00	Train 1-Mch_1_1	Alert	273.00g	-300.00g	50.00g	--	--
2007-01-31 23:40:00	Train 1-Mch_1_1	Alert	279.00g	-300.00g	50.00g	--	--
2007-01-31 23:40:00	Train 1-Mch_1_1	Alert	274.00g	-300.00g	50.00g	--	--
2007-01-31 23:40:00	Train 1-Mch_1_1	Alert	214.00g	-300.00g	50.00g	--	--
2007-01-31 23:40:00	Train 1-Mch_1_1	Alert	234.00g	-300.00g	50.00g	--	--
2007-01-31 23:40:00	Train 1-Mch_1_1	Alert	240.00g	-300.00g	50.00g	--	--
2007-01-31 23:40:00	Train 1-Mch_1_1	Alert	234.00g	-300.00g	50.00g	--	--
2007-01-31 23:40:00	Train 1-Mch_1_1	Alert	227.00g	-300.00g	50.00g	--	--
2007-01-31 23:40:00	Train 1-Mch_1_1	Alert	234.00g	-300.00g	50.00g	--	--
2007-01-31 23:40:00	Train 1-Mch_1_1	Alert	240.00g	-300.00g	50.00g	--	--
2007-01-31 23:40:00	Train 1-Mch_1_1	Alert	235.00g	-300.00g	50.00g	--	--
2007-01-31 23:40:00	Train 1-Mch_1_1	Alert	240.00g	-300.00g	50.00g	--	--
2007-01-31 23:40:00	Train 1-Mch_1_1	Alert	235.00g	-300.00g	50.00g	--	--
2007-01-31 23:40:00	Train 1-Mch_1_1	Alert	241.00g	-300.00g	50.00g	--	--
2007-01-31 23:40:00	Train 1-Mch_1_1	Alert	235.00g	-300.00g	50.00g	--	--
2007-01-31 23:40:00	Train 1-Mch_1_1	Alert	227.00g	-300.00g	50.00g	--	--
2007-01-31 23:40:00	Train 1-Mch_1_1	Alert	239.00g	-300.00g	50.00g	--	--
2007-01-31 23:40:00	Train 1-Mch_1_1	Alert	236.00g	-300.00g	50.00g	--	--
2007-01-31 23:40:00	Train 1-Mch_1_1	Alert	241.00g	-300.00g	50.00g	--	--
2007-01-31 23:40:00	Train 1-Mch_1_1	Alert	238.00g	-300.00g	50.00g	--	--
2007-01-31 23:40:00	Train 1-Mch_1_1	Alert	236.00g	-300.00g	50.00g	--	--
2007-01-31 23:40:00	Train 1-Mch_1_1	Alert	217.00g	-300.00g	50.00g	--	--
2007-01-31 23:40:00	Train 1-Mch_1_1	Alert	237.00g	-300.00g	50.00g	--	--
2007-01-31 23:40:00	Train 1-Mch_1_1	Alert	235.00g	-300.00g	50.00g	--	--
2007-01-31 23:40:00	Train 1-Mch_1_1	Alert	239.00g	-300.00g	50.00g	--	--
2007-01-31 23:40:00	Train 1-Mch_1_1	Alert	241.00g	-300.00g	50.00g	--	--
2007-01-31 23:40:00	Train 1-Mch_1_1	Alert	238.00g	-300.00g	50.00g	--	--
2007-01-31 23:40:00	Train 1-Mch_1_1	Alert	245.00g	-300.00g	50.00g	--	--
2007-01-31 23:40:00	Train 1-Mch_1_1	Alert	239.00g	-300.00g	50.00g	--	--
2007-01-31 23:40:00	Train 1-Mch_1_1	Alert	244.00g	-300.00g	50.00g	--	--
2007-01-31 23:40:00	Train 1-Mch_1_1	Alert	238.00g	-300.00g	50.00g	--	--
2007-01-31 23:40:00	Train 1-Mch_1_1	Alert	245.00g	-300.00g	50.00g	--	--
2007-01-31 23:40:00	Train 1-Mch_1_1	Alert	239.00g	-300.00g	50.00g	--	--
2007-01-31 23:40:00	Train 1-Mch_1_1	Alert	238.00g	-300.00g	50.00g	--	--
2007-01-31 23:40:00	Train 1-Mch_1_1	Alert	243.00g	-300.00g	50.00g	--	--
2007-01-31 23:40:00	Train 1-Mch_1_1	Alert	238.00g	-300.00g	50.00g	--	--
2007-01-31 23:40:00	Train 1-Mch_1_1	Alert	215.00g	-300.00g	50.00g	--	--
2007-01-31 23:40:00	Train 1-Mch_1_1	Alert	238.00g	-300.00g	50.00g	--	--

Route can be configured to three hierarchy layers:

- Machine-Train
- Machine
- Measurement- Point

Storage databases:

- ProvibTech's database

Data storage capacity:

- Limited by hardware storage capacity
- Unlimited by software

Routing capacity:

- Unlimited in machine train, machine and measurement point

Modbus interface:

- ✓ Works with all ProvibTech's digital monitors
 - PT2060
 - DTM
 - DM
 - PT580
 - PT371, PT372, PT373
- ✓ Works with any other vendors' Modbus RTU

Bar graph:

Each channel accepts up to 16 status parameters; such as OK, Alert, Danger, Trip-multiply, etc. This information is user-configurable.

For displays greater than 8 channels in the bar graph, the status output will not show.

Printer support:

Each graph can be printed.



PT371 Universal Input Module

The PT371 is a 16 channel input module.



It accepts the following inputs:

- Voltage input: 0 - 10V; -5 to +5V
- Current input: 4 - 20mA (with the shut resistor)
- Thermocouple or thermo resistors:
- Discrete input: any 0-24V; 0-12V; 0-5V
- TC: K, E, S, T, N, J, B, R, EU-2
- Compensation mode: Inner, Specify and Exterior
- RTD: Pt100, Cu50, Cu100, BA1, BA2, G
- Wire Unit: 2-wires, 3-wires

Data acquisition rate:

1.0 sec

Amplitude resolution:

PT371 module: 12 bit
0.2% FS

Power supply:

24VDC +/- 10% @ 150mA

PT372 4-20mA Output Module

The PT372 is a 4 channel 4-20mA output module used with the PCM370.



Amplitude resolution:

PT372 module: 12bit

Power supply:

24VDC +/- 10% @ 100mA

Maximum load:

750 ohms

PT373 Relay Module

The PT373 is a 16 channel relay module. It is designed for the PCM370 system output (for alarm outputs).

The PT373 can be configured for any logic combination of alarms or status of each channel from the PCM370.

The relays are selectable as: energized/de-energized, latching/non-latching and bypass.



Power supply:

24VDC +/- 10% @ 150mA

Relays:

- Seal: epoxy
- Capacity: 0.5A/230VAC/30VDC, resistive load
- Relay type: SPTD
- Isolation: 1000VDC

PCM-TOUCH-15 Touch Panel PC

Specifications:

1. Touch panel, color 15" PC
2. Mounting size: H: 321 mm (12.6")
W: 414.20 mm (16.3")
3. IP65 environmental protection



321 mm (12.6") X 414.20 mm (16.3")



PCM-TOUCH-12 Touch Panel PC

Specifications:

- 1 Touch panel, color 12" PC
- 2 Mounting size: H: 259 mm (10.2")
W: 360 mm (14.2")
- 3 IP65 environmental protection

System Requirements:

1. Operation System: Windows XP or Windows 2000
2. CPU: P4 2.0MHz
3. Memory: 512MB
4. Hard Disk: 40G
5. Display: VGA or touch panel

Order Information

PCM370-AX-BX-CX-DX

PCM370 plant condition management system software:

AX: Condition monitoring module selection

A0: Standard condition monitoring

Train 1-Status List						
Name	Measure Value	AlertHigh	DangerHigh	AlertLow	DangerLow	Digital Status
1_MaA_1_1_MauiP1110CChan	228.89 g	>389.88 g	58.88 g	--	--	True
1_MaA_1_1_MauiP1110CChan	228.89 g	>389.88 g	58.88 g	--	--	True
1_MaA_1_1_MauiP1111CChan	242.89 g	>403.88 g	128.88 g	--	--	False
1_MaA_1_1_MauiP1111CChan	242.89 g	>403.88 g	128.88 g	--	--	False
1_MaA_1_1_MauiP1120CChan	1808.88 EU	>1808.88 EU	1208.88 EU	--	--	--
1_MaA_1_1_MauiP1120CChan	1808.88 EU	>1808.88 EU	1208.88 EU	--	--	--
1_MaA_1_2_MauiP1210CChan	1808.88 EU	>1808.88 EU	1208.88 EU	--	--	--
1_MaA_1_2_MauiP1210CChan	1808.88 EU	>1808.88 EU	1208.88 EU	--	--	--
1_MaA_1_2_MauiP1220CChan	1808.88 EU	>1808.88 EU	1208.88 EU	--	--	--
1_MaA_1_2_MauiP1220CChan	1808.88 EU	>1808.88 EU	1208.88 EU	--	--	--
1_MaA_1_3_MauiP1310CChan	1808.88 EU	>1808.88 EU	1208.88 EU	--	--	--
1_MaA_1_3_MauiP1310CChan	1808.88 EU	>1808.88 EU	1208.88 EU	--	--	--
1_MaA_1_3_MauiP1320CChan	1808.88 EU	>1808.88 EU	1208.88 EU	--	--	--
1_MaA_1_3_MauiP1320CChan	1808.88 EU	>1808.88 EU	1208.88 EU	--	--	--
1_MaA_1_4_MauiP1410CChan	1808.88 EU	>1808.88 EU	1208.88 EU	--	--	--
1_MaA_1_4_MauiP1410CChan	1808.88 EU	>1808.88 EU	1208.88 EU	--	--	--
1_MaA_1_4_MauiP1411CChan	1808.88 EU	>1808.88 EU	1208.88 EU	--	--	--
1_MaA_1_4_MauiP1420CChan	1808.88 EU	>1808.88 EU	1208.88 EU	--	--	--

BX: Database selection

B0: ProvibTech's single license database

CX: User license

C0: Single user license

DX: Hardware interface

D0: All available hardware

D1: PT2060

Accessories

PT371 input module

16 channels multiple input modules (voltage input, current input, RTD, digital input/relay)

PT372 4-20mA output module

4 channels with a 4-20mA output module

PT373 relay module output

16 relays

DTM96

RS485 to RS232/RS485/RS422 converter with signal isolation for Modbus connection

RS232-USB

RS232 to USB converter for Modbus connection

RS485-USB

RS485 to USB converter for Modbus connection with isolation

PCM-TOUCH

Touch panel PC that works with PCM370 software

PCM-T-15-230 (15", 230VAC)

PCM-T-15-110 (15", 110VAC)

PCM-T-12-230 (12", 230VAC)

PCM-T-12-110 (12", 110VAC)

