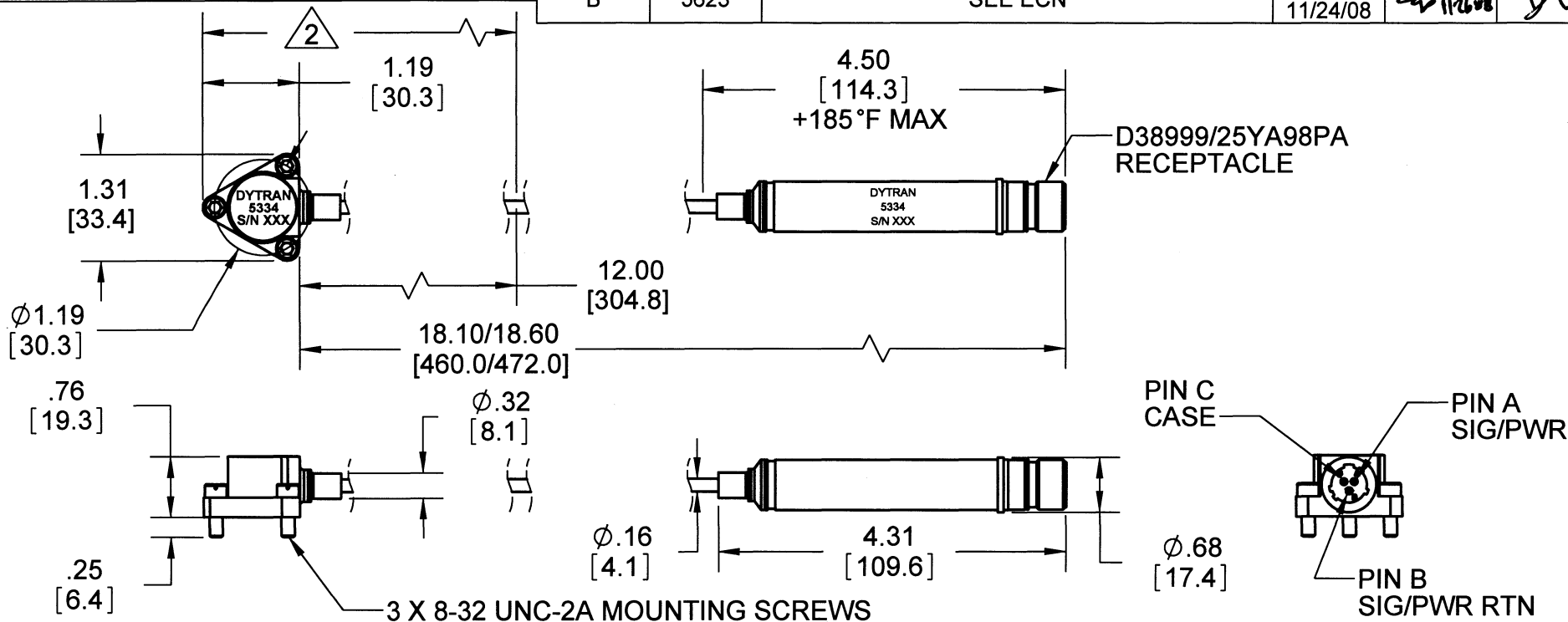


PROPRIETARY AND CONFIDENTIAL

THE INFORMATION CONTAINED IN THIS DRAWING IS THE SOLE PROPERTY OF DYTRAN INSTRUMENTS INC. ANY REPRODUCTION IN PART OR AS A WHOLE WITHOUT THE WRITTEN PERMISSION OF DYTRAN INSTRUMENTS, INC. IS PROHIBITED

REVISIONS

REV.	ECN	DESCRIPTION	BY/DATE	CHK	APPR
B	5623	SEE ECN	RA, 11/24/08	<i>[Signature]</i>	<i>[Signature]</i>



3. MOUNTING SCREWS (MODEL 6535) ARE SUPPLIED.

**2** MAX TEMP 900°F APPLIES ONLY TO THE DESIGNATED AREA OF THE SYSTEM.

1. NOMINAL SENSITIVITY 10mV/G.

NOTES: UNLESS OTHERWISE SPECIFIED.


5334	
USED ON	NEXT ASSY
APPLICATION	
THIRD ANGLE PROJECTION USA	

UNLESS OTHERWISE SPECIFIED:  
 INTERPRET DIM & TOL PER ASME Y14.5M - 1994.  
 REMOVE BURRS.  
 COUNTERSINK INTERNAL THDS 90° TO MAJOR DIA.  
 CHAM EXT THDS 45° TO MINOR DIA.  
 THD LENGTHS AND DEPTHS ARE FOR MIN FULL THDS.  
 THDS PER MIL-S-7742.  
 DIMENSIONS APPLY AFTER FINISHING.  
 ALL MACHINED SURFACES.  
 TOTAL RUNOUT WITHIN .005.  
 BREAK SHARP EDGES .005 TO .010.  
 MACHINED FILLET RADII .005 TO .015.  
 WELDING SYMBOLS PER AWS A2.4.  
 ABBREVIATIONS PER MIL-STD-12.

UNLESS OTHERWISE SPECIFIED:  
 DIMENSIONS ARE IN INCHES.  
 DIMENSIONS IN BRACKETS [ ] ARE IN MILLIMETERS  
 TOLERANCES ARE:  
 INCHES METRIC ANGLES  
 .XX ± .03 .X ± 0.8 ± 1°  
 .XXX ± 0.10 .XX ± 0.25

MATERIAL		
FINISH		
DO NOT SCALE DRAWING		

CONTRACT NO.		
APPROVALS		DATE
ORIG	PML	12/12/07
CHK	R.A.	8/08/08
APP	D.V.	8/08/08
APP		



**MASTER ONLY IF IN RED**

Chatsworth, CA

TITLE: **OUTLINE/INSTALLATION DRAWING, MODEL 5334**

SIZE <b>A</b>	CAGE CODE <b>2W033</b>	DWG. NO. <b>127-5334</b>	REV <b>B</b>
SCALE: 1:2	SOLIDWORKS	SHEET 1 OF 1	

**MODEL 5334 HIGH TEMPERATURE VIBRATION MEASUREMENT SYSTEM**

<b>SPECIFICATION</b>	<b>VALUE</b>	<b>UNITS</b>
<b>PHYSICAL</b>		
WEIGHT, including cables, accel and amplifier	150	grams
MOUNTING PROVISION	Three-hole flange for #8 SCREWS	
CABLE FROM ACCEL. TO CHG. AMP., (18 in LENGTH)	2-conductor shielded hardline cable	
CONNECTOR FROM CHARGE AMPLIFIER	D38999/25YA98PA	
MATERIAL, ACCELEROMETER	304L CRES	
<b>PERFORMANCE (SYSTEM)</b>		
SENSITIVITY, $\pm 5\%$ [1]	10	mV/g
RANGE F.S. FOR $\pm 5$ VOLTS OUTPUT	$\pm 500$	g
FREQUENCY RANGE, $\pm 5\%$	4.8 to 660	Hz
FREQUENCY RANGE, -3db	1.6 to 2000	Hz
RESONANT FREQUENCY, NOM.	35	kHz
EQUIVALENT ELECTRICAL NOISE FLOOR	.01	grms
LINEARITY [2]	$\pm 2\%$	% F.S.
TRANSVERSE SENSITIVITY, MAX.	5	%
STRAIN SENSITIVITY @ 250 $\mu\epsilon$	.012	g/ $\mu\epsilon$
<b>ENVIRONMENTAL</b>		
MAXIMUM VIBRATION	$\pm 600$	gpk
MAXIMUM SHOCK	$\pm 2000$	gpk
TEMPERATURE RANGE (ACCELEROMETER)	-65 to +900	$^{\circ}$ F
TEMPERATURE RANGE (CHARGE AMPLIFIER)	-50 TO +185	$^{\circ}$ F
SEAL, (ACCELEROMETER & CHG. AMP) HERMETIC	Ceramic-to-metal and laser welded	
COEFFICIENT OF THERMAL SENSITIVITY	.02	%/ $^{\circ}$ C
<b>ELECTRICAL</b>		
SUPPLY CURRENT RANGE [3]	4 to 20	mA
COMPLIANCE VOLTAGE RANGE	15 to 30	Volts
OUTPUT IMPEDANCE, TYP.	100	Ohms
BIAS VOLTAGE, +8 VOLTS NOM.	+7 to +9	VDC
DISCHARGE TIME CONSTANT, NOM.	0.1	Sec
OUTPUT SIGNAL POLARITY FOR ACCELERATION TOWARD TOP		Positive
ELECTRICAL ISOLATION, GROUND WIRE TO CASE	10 Megohms, min.	

**Supplied accessories:**

**Mounting screw, model 6535 (8-32 UNC-2A, quantity of 3(three))**

[1] Measured at 100 Hz, 1 g rms per ISA RP 37.2.

[2] Measured using zero-based best straight line method, % of F.S. or any lesser range.

[3] Do not apply power to this system without current limiting, 20 mA MAX. To do so will destroy the IC charge amplifier.

**OPERATING INSTRUCTIONS MODEL 5334**

