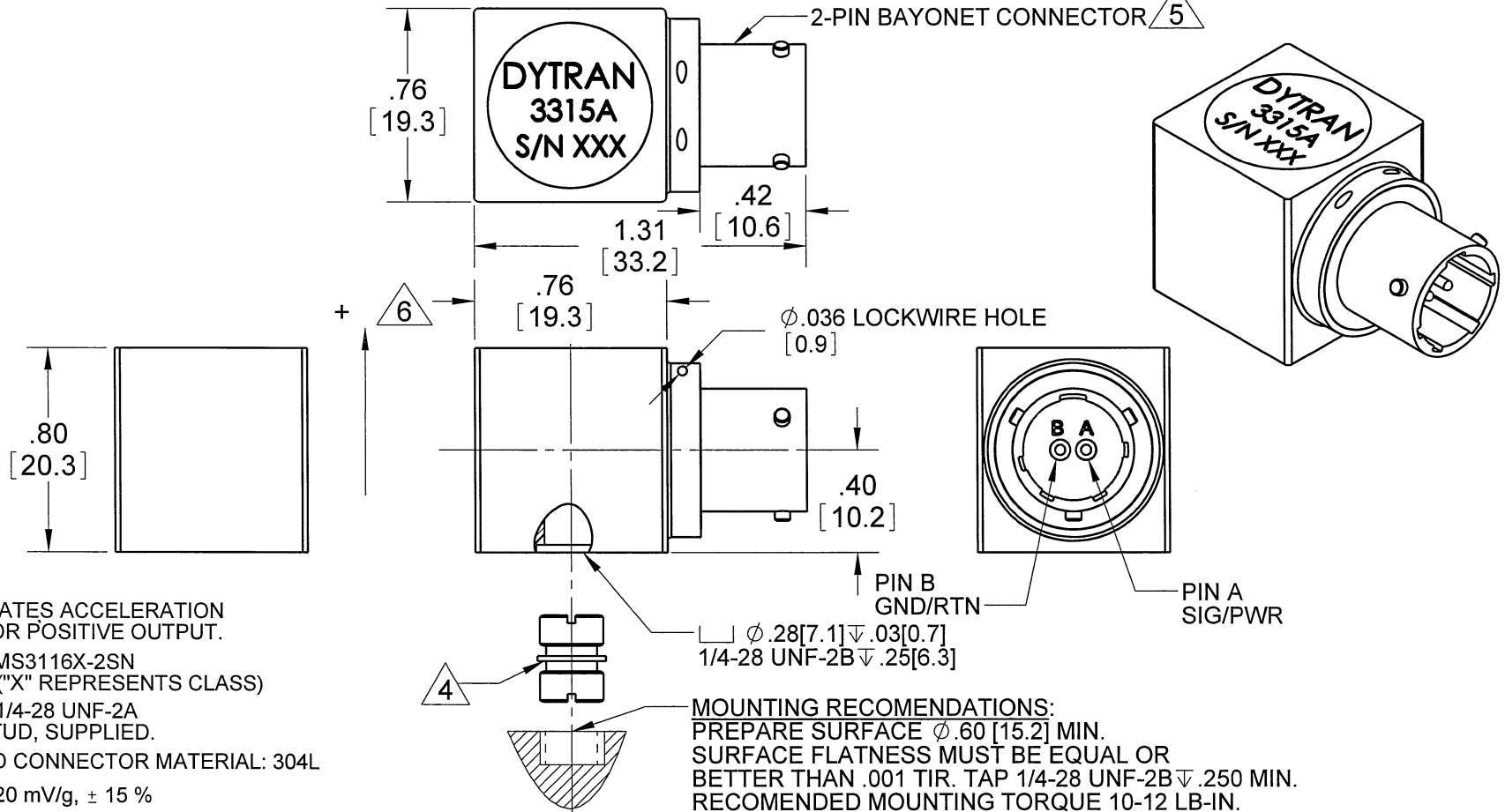


PROPRIETARY AND CONFIDENTIAL

REVISIONS

THE INFORMATION CONTAINED IN THIS DRAWING IS THE SOLE PROPERTY OF DYTRAN INSTRUMENTS INC. ANY REPRODUCTION IN PART OR AS A WHOLE WITHOUT THE WRITTEN PERMISSION OF DYTRAN INSTRUMENTS INC. IS PROHIBITED

REV	ECN	DESCRIPTION	BY/DATE	CHK	APPR
A	6884	INITIAL RELEASE	RA 06/21/10	fl	AWS



- 6 ARROW INDICATES ACCELERATION DIRECTION FOR POSITIVE OUTPUT.
- 5 MATES WITH MS3116X-2SN CONNECTOR ("X" REPRESENTS CLASS)
- 4 MODEL 6176, 1/4-28 UNF-2A MOUNTING STUD, SUPPLIED.
- 3. HOUSING AND CONNECTOR MATERIAL: 304L
- 2. SENSITIVITY: 20 mV/g, ± 15 %
- 1. WEIGHT (APPROX): 49 GRAMS

NOTES: UNLESS OTHERWISE SPECIFIED

USED ON	NEXT ASSY	UNLESS OTHERWISE SPECIFIED: INTERPRET DIM & TOL PER ASME Y14.5M - 1994. REMOVE BURRS. COUNTERSINK INTERNAL THDS 90° TO MAJOR DIA. CHAM EXT THDS 45° TO MINOR DIA. THD LENGTHS AND DEPTHS ARE FOR MIN FULL THDS. THDS PER MIL-S-7742. DIMENSIONS APPLY AFTER FINISHING.	UNLESS OTHERWISE SPECIFIED: DIMENSIONS ARE IN INCHES. DIMENSIONS IN BRACKETS [ ] ARE IN MILLIMETERS TOLERANCES ARE: INCHES    METRIC    ANGLES .XX ± .03    X ± 0.8    ± 1° .XXX ± .010    .XX ± 0.25
APPLICATION			
THIRD ANGLE PROJECTION USA		ALL MACHINED SURFACES. TOTAL RUNOUT WITHIN .005. BREAK SHARP EDGES .005 TO .010. MACHINED FILLET RADII .005 TO .015. WELDING SYMBOLS PER AWS A2.4. ABBREVIATIONS PER MIL-STD-12.	MATERIAL FINISH DO NOT SCALE DRAWING

CONTRACT NO.



TITLE:			
OUTLINE/INSTALLATION, 3315A			
APPROVALS	DATE	SIZE	CAGE CODE
ORIG RA	06/21/10	A	2W033
CHK fl	07/16/10		
APP AWS	7/19/10		
APP		DWG. NO.	REV
		127-3315A	A
SCALE: 3:2		SOLIDWORKS	SHEET 1 OF 1

<b>Model Number</b> 3315A	<b>PERFORMANCE SPECIFICATIONS</b>	<b>DOC NO</b> PS3315A
------------------------------	-----------------------------------	--------------------------

	<b>IEPE ACCELEROMETER</b>	REV A, ECN 6884, 06/22/10
--	---------------------------	---------------------------



- HERMETICALLY SEALED
- EXCELLENT LINEARITY

**PHYSICAL**

Weight  
Connector  
Mounting Provision  
Material, Housing/Connector  
Sensing Element

Type  
Tapped Hole

ENGLISH		SI	
1.72	oz	49.0	grams
2 PIN, Mil- C -2648P		2 PIN, Mil- C -2648P	
1/4-28		1/4-28	
304 L		304 L	
QUARTZ		QUARTZ	

**PERFORMANCE**

Sensitivity, ±15% [1]  
Range for ± 5 Volts Output  
Frequency Response, ± 3db  
Resonant Frequency  
Broad Band Resolution  
Linearity [2]  
Maximum Transverse sensitivity  
Strain Sensitivity @ 250µε

20	mV/g	2	mV/m/s <sup>2</sup>
250	g	2453	m/s <sup>2</sup>
0.5 to 10000	Hz	0.5 to 10000	Hz
>28	kHz	>28	kHz
0.00075	Grms	0.007	m/s <sup>2</sup> rms
±1	% F.S.	±1	% F.S.
5	%	5	%
0.003	g/µε	0.03	m/s <sup>2</sup> /µε

**ENVIRONMENTAL**

Maximum Vibration  
Maximum Shock  
Temperature Range  
Seal

500	Gpeak	4905	m/s <sup>2</sup> peak
5000	Gpeak	49050	m/s <sup>2</sup> peak
-60 to +250	*F	-51 to +121	*C
HERMETIC		HERMETIC	

**ELECTRICAL**

Supply Current Range [3]  
Compliance Voltage Range  
Output Impedance, Max  
Bias Voltage  
Discharge Time Constant  
Electrical Isolation

2 to 20	mA	2 to 20	mA
+20 to +30	Volts	+20 to +30	Volts
150	Ω	150	Ω
8 to 12	VDC	8 to 12	VDC
0.5 to 0.8	Sec	0.5 to 0.8	Sec
10	GΩ,min	10	GΩ,min

**This family also includes:**

Model	Sensitivity (mV/g)	Frequency Response (Hz)	Time Constant (Sec)	Operating Temp (*F)

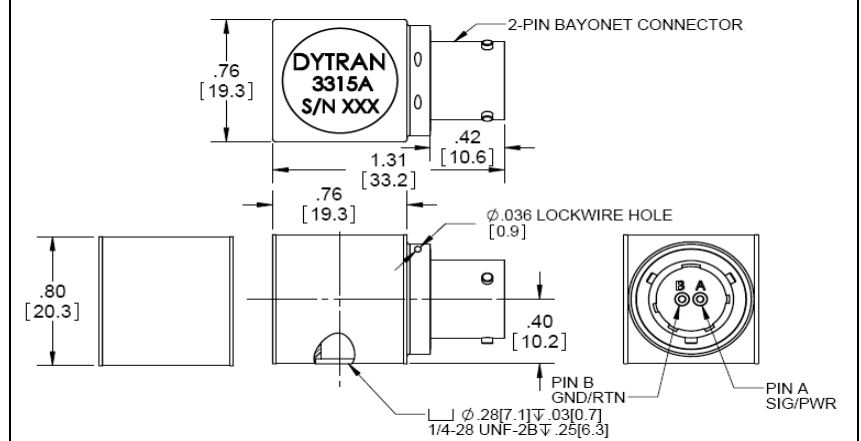
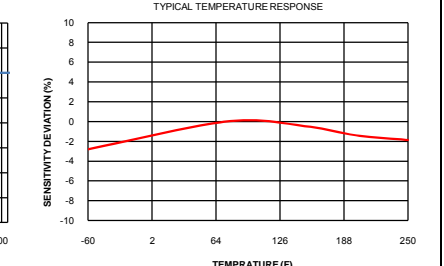
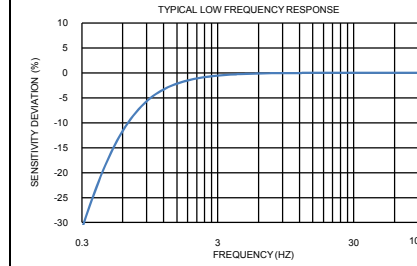
Refer to the performance specifications of the products in this family for detailed description

**Supplied Accessories:**

- 1) Accredited calibration certificate (ISO 17025)
- 2) Mounting stud model 6176

**Notes:**

- [1] Measured at 100Hz, 1 Grms per ISA RP 37.2.
- [2] Measure using zero-based straight line method, % of F.S. or any lesser range.
- [3] Do not apply power to this system without current limiting, 20 mA MAX. To do so will destroy the IC charge amplifier.
- [4] In the interest of constant product improvement, we reserve the right to change specifications without notice.



Units on the line drawing are in inches, units in brackets are in millimeters. Refer to 127-3315A for more information.



21592 Marilla Street, Chatsworth, California 91311 Phone: 818.700.7818 Fax: 818.700.7880 www.dytran.com  
For permission to reprint this content, please contact info@dytran.com