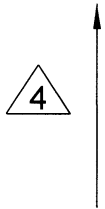
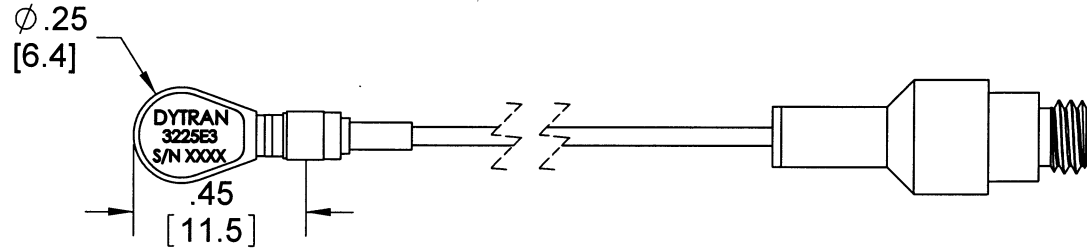


**PROPRIETARY AND CONFIDENTIAL**

THE INFORMATION CONTAINED IN THIS DRAWING IS THE SOLE PROPERTY OF DYTRAN INSTRUMENTS INC. ANY REPRODUCTION IN PART OR AS A WHOLE WITHOUT THE WRITTEN PERMISSION OF DYTRAN INSTRUMENTS, INC. IS PROHIBITED

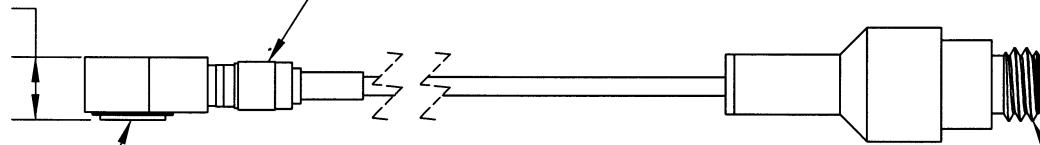
**REVISIONS**

REV.	ECN	DESCRIPTION	BY/DATE	CHK	APPR
A	5830	INITIAL RELEASE	03/23/09	<i>DL</i>	<i>AWS</i>



.16  
[4.1]

3-56 COAXIAL CONNECTOR  
MATES ONLY WITH DYTRAN CABLE  
MODEL 6003AXX



MOUNTING SURFACE  
Ø.17

10-32 CONNECTOR

4. ARROW INDICATES ACCELERATION DIRECTION THAT CORRESPONDS TO POSITIVE OUTPUT
3. CASE AND CONNECTOR MATERIAL: TITANIUM
2. WEIGHT LESS CABLE: 0.6 GRAMS.
1. RECOMMENDED MOUNTING ADHESIVE: CYANOACRYLATE

NOTES: UNLESS OTHERWISE SPECIFIED

USED ON	NEXT ASSY
APPLICATION	
THIRD ANGLE PROJECTION USA	

UNLESS OTHERWISE SPECIFIED:  
INTERPRET DIM & TOL PER ASME Y14.5M - 1994.  
REMOVE BURRS.  
COUNTERSINK INTERNAL THDS 90° TO MAJOR DIA.  
CHAM EXT THDS 45° TO MINOR DIA.  
THD LENGTHS AND DEPTHS ARE FOR MIN FULL THDS.  
THDS PER MIL-S-7742.  
DIMENSIONS APPLY AFTER FINISHING.  
ALL MACHINED SURFACES.  
TOTAL RUNOUT WITHIN .005.  
BREAK SHARP EDGES .005 TO .010.  
MACHINED FILLET RADII .005 TO .015.  
WELDING SYMBOLS PER AWS A2.4.  
ABBREVIATIONS PER MIL-STD-12.

UNLESS OTHERWISE SPECIFIED:  
DIMENSIONS ARE IN INCHES.  
DIMENSIONS IN BRACKETS [ ] ARE IN MILLIMETERS  
TOLERANCES ARE:  
INCHES    METRIC    ANGLES  
.XX ± .03    .X ± 0.8    ± 1°  
.XXX ± .010    .XX ± 0.25

MATERIAL

FINISH

DO NOT SCALE DRAWING

CONTRACT NO.

APPROVALS		DATE
ORIG	JS	03/20/09
CHK	<i>DL</i>	3/31/09
APP	<i>AWS</i>	4/2/09
APP		

**DYTRAN INSTRUMENTS, INC.** Chatsworth, CA

**MASTER ONLY IF IN RED**

TITLE: **OUTLINE INSTALLATION DRAWING 3225E3**

SIZE	CAGE CODE	DWG. NO.	REV
<b>A</b>	<b>2W033</b>	<b>127-3225E3</b>	<b>A</b>

SCALE: 2:1    SOLIDWORKS    SHEET 1 OF 1

<b>MODEL NUMBER</b> <b>3225E3</b>	<b>PERFORMANCE SPECIFICATION</b>	<b>DOC NO.</b> <b>PS3225E3</b>
	<b>CHARGE MODE ACCELEROMETER</b>	REV C ,ECN 6935,08/30/10



- MINIATURE SIZE
- REMOVABLE CABLE
- HERMETICALLY SEALED

**PHYSICAL**

Weight  
Mounting Provision  
Connector [2]  
Case Material  
Sensing Element Type

ENGLISH		SI	
0.021	oz	0.6	grams
[1]		[1]	
3 - 56 UNF-2A		3 - 56 UNF-2A	
Titanium		Titanium	
Piezoceramic		Piezoceramic	

**PERFORMANCE**

Sensitivity, ±20% [3] [4]  
Frequency Response, +/- 10%  
Mounted Resonant Frequency, NOM  
Amplitude Non-Linearity  
Transverse Sensitivity, Max  
Strain Sensitivity @250/μσ

1.8	pC/g	0.183	pC / m/s <sup>2</sup>
[5] to 10000	Hz	[5] to 10000	Hz
40	kHz	40	kHz
2	%F.S MAX	2	%F.S MAX
5	%	5	%
0.04	g/με	0.392	m/s <sup>2</sup> / με

**ENVIRONMENTAL**

Maximum Vibration  
Maximum Shock  
Temperature Range  
Environmental Seal

400	g rms	3920	m/s <sup>2</sup> rms
5000	g	49000	m/s <sup>2</sup>
-60 to +350	°F	-51 to + 176	°C
Hermetic		Hermetic	

**ELECTRICAL**

Output Signal Polarity  
Case Grounding

Positive	Positive
Case is grounded	Case is grounded

**This family also includes:**

Model					

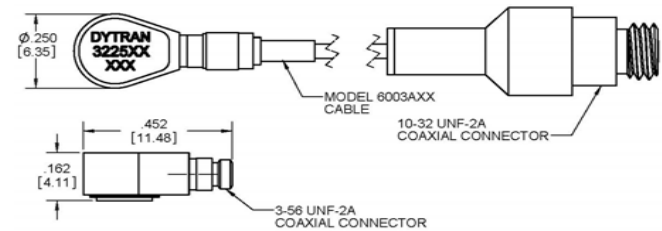
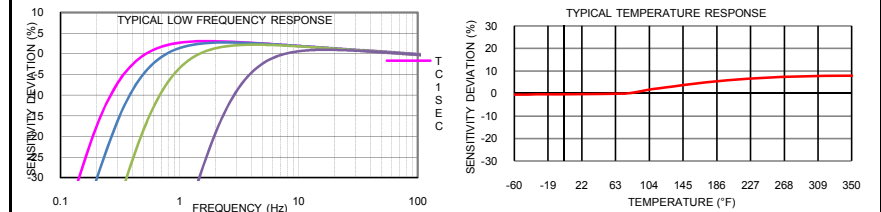
Please, refer to the performance specifications of the products in this family for detailed description.

**Supplied Accessories**

- 1) Model 6591A installation wrench.
- 2) Model 6298 small petro mounting wax.
- 3) Model 6003A03 removable cable.
- 4) Accredited calibration certificate (ISO 17025)

**Notes:**

- [1] Flat mounting surface for adhesive mount.
- [2] Connector , radially mounted. Connector mates only with Dytran cable model 6003XX. (XX is length in feet )
- [3] Measured at 100 Hz, 1 G RMS per ISA RP37.2.
- [4] Actual sensitivity is given on a calibration certificate traceable to NIST, supplied with each instrument.
- [5] Low frequency response is depend upon the discharge time constant of the charge amplifier.



Units on the line drawing are in inches, units in brackets are in millimeters. Refer to 127-3225E3 for more information.



21592 Marilla Street, Chatsworth, California 91311 Phone: 818.700.7818 Fax:818.700.7880  
www.dytran.com For permission to reprint this content, please contact info@dytran.com