

Model WMC Miniature Sealed Stainless Steel Load Cell

Capacities 5-500 lbf (22-2200N)

- Proprietary Interface temperature compensated strain gages
- Tension & compression
- Small size
- Environmentally sealed



STANDARD CONFIGURATION

5 ft. (1.5m) Integral Cable

OPTIONS

Extra Cable Length
Submersible

ACCESSORIES

Instrumentation

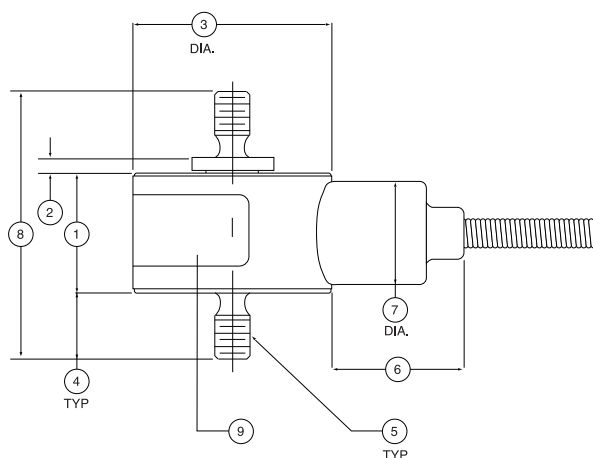
DIMENSIONS

See Drawing	CAPACITY					
	5, 10 lbf 22, 45 N		25, 50, 100 lbf 110, 220, 450 N		250, 500 lbf 1100, 2200 N	
	inch	mm	inch	mm	inch	mm
(1)	0.45	11.4	0.52	13.2	0.53	13.4
(2)	0.06	1.5	0.03	0.8	0.03	0.8
(3)	0.75	19.1	1.00	25.4	1.00	25.4
(4)	0.25	6.4	0.25	6.4	0.38	9.7
(5)	6-32 UNC M4x0.7		10-32 UNF M5x0.8		1/4-28 UNF M6x1	
(6)	0.50	12.7	0.50	12.7	0.50	12.7
(7)	0.39	9.9	0.39	9.9	0.39	9.9
(8)	1.01	25.7	1.05	26.7	1.32	33.5
(9)	label		label		label	

Deflection @ RO - inch (mm)						
5	10	25	50	100	250	500
0.0012 (0.030)	0.0010 (0.025)	0.0014 (0.036)	0.0010 (0.025)	0.0007 (0.018)	0.0026 (0.066)	0.0025 (0.064)

SPECIFICATIONS

ACCURACY – (MAX ERROR)	
Nonlinearity-% FS	±0.15
Hysteresis-% FS	±0.15
Nonrepeatability-% RO	±0.05
Creep, in 20 min-%	±0.05
TEMPERATURE	
Compensated Range-°F	15 to 115
Compensated Range-°C	-10 to 45
Operating Range-°F	-65 to 250
Operating Range-°C	-54 to 121
Effect on Output-%/°F – MAX	±0.002
Effect on Zero-% RO/°F – MAX	±0.005
ELECTRICAL	
Rated Output-mV/V (Nominal)	2.0
Zero Balance-%RO	±2.0
Bridge Resistance-Ohm (Nominal)	350
Excitation Voltage-MAX	12.0 VDC
Insulation Resistance-Megohm	> 5000
MECHANICAL	
Calibration	T & C
Safe Overload-% CAP	
5, 10 lbf (22, 45 N)	150
25-500 lbf (110-2200 N)	150
Cable length	5 ft. (1.5m)
Weight	0.05 - 0.12 (lb) 22.7 - 54.4 (g)



WMC Mini 5-500 lbf
4/6/12