

# Model SSM Sealed S-Type Load Cell (U.S. & Metric)



Why the Interface model SSM Sealed S-Type Load Cell is the best in class:

- Proprietary Interface temperature compensated strain gages
- Environmentally sealed
- .02% nonrepeatability
- .0008%/°F (.0015%/°C) temp. effect on output
- .025% creep
- Tension and compression

## STANDARD CONFIGURATION

10 ft Integral Cable (SSM-AJ-nn)  
 <or> PC04E-10-6P Standard Connector (SSM-AF-nn)  
 (Connector available only in 500-5K lbf capacities)

## OPTIONS

PC04E-10-6P Connector (SSM-500 and above)  
 LEMO Connector  
 Standardized Output  
 High Temperature  
 Extra Cable Length

## ACCESSORIES

Load Button  
 Instrumentation  
 Mounting Hardware

Consult factory for more technical information

## SPECIFICATIONS

**ACCURACY – (MAX ERROR)**  
 Nonlinearity-% FS .....±0.05  
 Hysteresis-% FS .....±0.03  
 Nonrepeatability-% RO .....±0.02  
 Creep, in 20 min-% .....±0.025

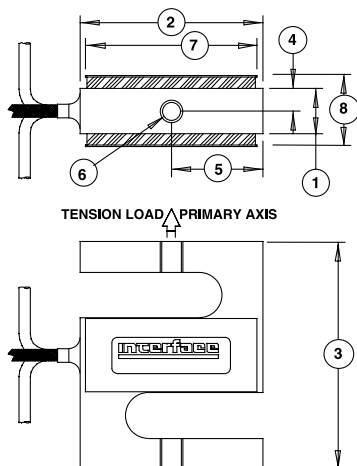
**TEMPERATURE**  
 Compensated Range-°F .....0 to 150  
 Compensated Range-°C .....-15 to 65  
 Operating Range-°F .....-65 to 200  
 Operating Range-°C .....-55 to 90  
 Effect on Output-%/°F – MAX .....±0.0008  
 Effect on Output-%/°C – MAX .....±0.0015  
 Effect on Zero-% RO/°F – MAX .....±0.0015  
 Effect on Zero-% RO/°C – MAX .....±0.0027

**ELECTRICAL**  
 Rated Output-mV/V (Nominal) .....3  
 Zero Balance-% RO .....±1  
 Bridge Resistance-Ohm (Nominal) .....350  
 Excitation Voltage – MAX .....15 VDC  
 Insulation Resistance-Megohm .....> 5000

**MECHANICAL**  
 Calibration .....Tension  
 Safe Overload-% CAP .....150  
 Cable length-ft .....10  
 Natural Frequency/Deflection:

lbf	N	Deflection (inches)	Nat. Freq. (Hertz)
50	200	.003	1500
100	500	.004	1850
150	500	.004	1850
250	1000	.006	2350
500	2kN	.005	2150
750	n/a	.005	2350
1000	5kN	.005	3350
2000	10kN	.005	2400
3000	n/a	.005	3000
5000	20kN	.005	2520

## DIMENSIONS



See Drawing	CAPACITY							
	U.S. (lbf)	Metric (N)	U.S. (lbf)	Metric (N)	U.S. (lbf)	Metric (kN)	U.S. (lbf)	Metric (kN)
	inch	mm	inch	mm	inch	mm	inch	mm
①	0.50	12.7	0.50	12.7	1.00	25.4	1.50	38.1
②	2.00	50.8	2.00	50.8	2.00	50.8	2.50	63.5
③	2.50	63.5	2.50	63.5	3.00	76.2	3.50	88.9
④	0.25	6.40	0.25	6.40	0.50	12.7	0.75	19.1
⑤	1.00	25.4	1.00	25.4	1.00	25.4	1.25	31.8
⑥	1/4-28 UNF-2B	M6 x 1-6H	1/4-28 UNF-2B	M6 x 1-6H	1/2-20 UNF-2B	M12 x 1.75-6H	5/8-18 UNF-2B	M16 x 2-6H
⑦	1.88	47.8	1.88	47.8	1.88	47.8	2.38	60.5
⑧	0.82	20.8	0.72	18.3	1.22	31.0	1.75	44.5