

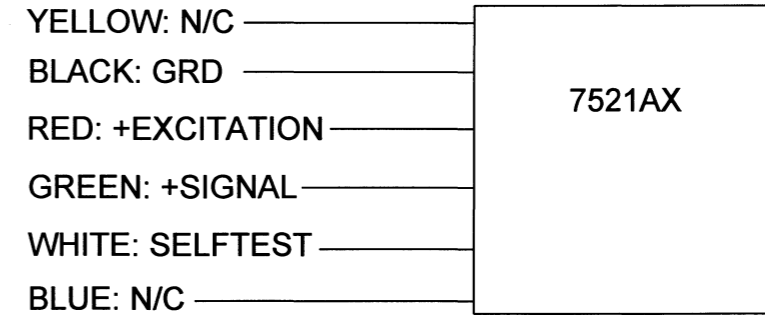
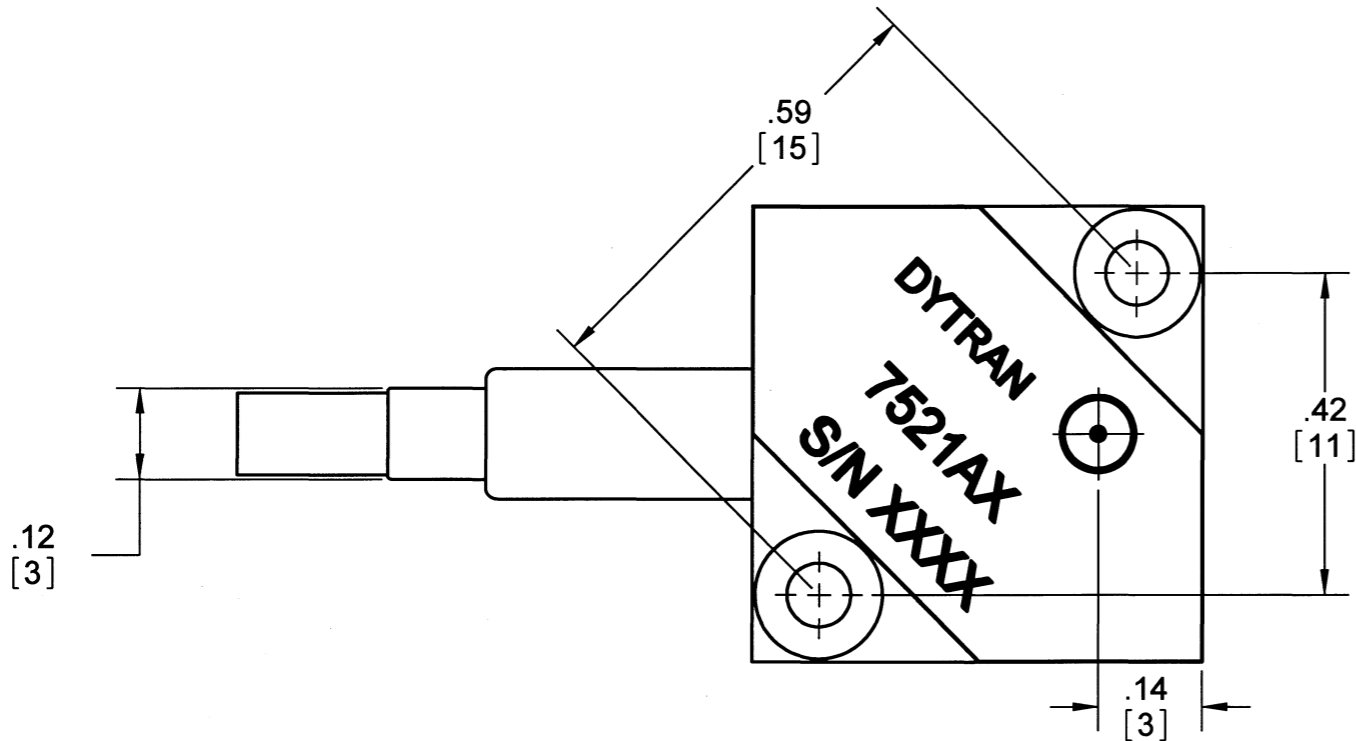
PROPRIETARY AND CONFIDENTIAL

THE INFORMATION CONTAINED IN THIS DRAWING IS THE SOLE PROPERTY OF DYTRAN INSTRUMENTS INC. ANY REPRODUCTION IN PART OR AS A WHOLE WITHOUT THE WRITTEN PERMISSION OF DYTRAN INSTRUMENTS INC IS PROHIBITED.

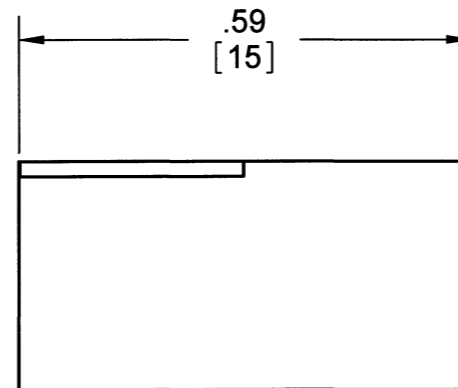
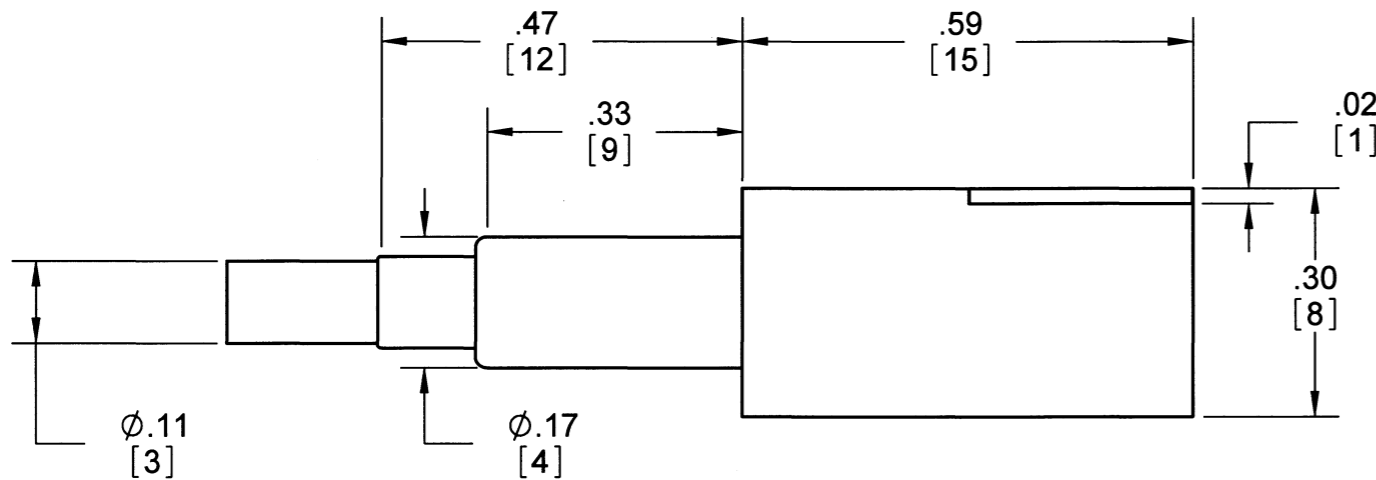
DWG NO 127-7521A SH 1 REV C

REVISIONS

REV.	ECN	DESCRIPTION	BY/DATE	CHK	APPR
A	5112	INITIAL RELEASE	03/07/08	CES	PML
B	5263	REVISED POLARITY MARKING	JS 06/05/08	RA	DV
C	5547	SEE ECN	DV 01/05/09	ANS	<i>[Signature]</i>



WIRING DIAGRAM

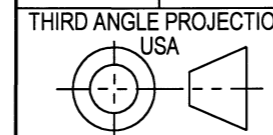


7521A1	550mV/g
7521A2	280mV/g
7521A3	93mV/g
7521A4	55mV/g
7521A5	36mV/g
7521A6	18mV/g
7521A7	8mV/g

**1** DIRECTION OF ACCELERATION FOR POSITIVE OUTPUT

NOTES: UNLESS OTHERWISE SPECIFIED

DRILL HOLE SIZE	TOLERANCE
.0135 THRU .125	+ .004 / - .001
.1260 THRU .250	+ .005 / - .001
.2510 THRU .500	+ .006 / - .001
.5010 THRU .750	+ .008 / - .001
.7510 THRU 1.000	+ .010 / - .001
1.001 THRU 2.000	+ .012 / - .001



UNLESS OTHERWISE SPECIFIED:  
 INTERPRET DIM & TOL PER ASME Y14.5M - 1994.  
 REMOVE BURRS.  
 COUNTERSINK INTERNAL THDS 90° TO MAJOR DIA.  
 CHAM EXT THDS 45° TO MINOR DIA.  
 THD LENGTHS AND DEPTHS ARE FOR MIN FULL THDS.  
 THDS PER MIL-S-7742.  
 DIMENSIONS APPLY AFTER FINISHING.  
 ALL MACHINED SURFACES:  $\sqrt{63}$   
 TOTAL RUNOUT WITHIN .005.  
 BREAK SHARP EDGES .005 TO .010.  
 MACHINED FILLET RADII .005 TO .015.  
 WELDING SYMBOLS PER AWS A2.4.  
 ABBREVIATIONS PER MIL-STD-12.

UNLESS OTHERWISE SPECIFIED:  
 DIMENSIONS ARE IN INCHES.  
 TOLERANCES ARE:  
 DECIMALS .XX ± .010  
 .XXX ± .005  
 ANGLES ± 1°

MATERIAL:

FINISH:

DO NOT SCALE DRAWING

CONTRACT NO.

APPROVALS

DATE

ORIG

PML

10/18/07

CHK

CES

03/14/08

APP

PML

03/14/08

APP



**MASTER ONLY IF IN RED**

TITLE: **OUTLINE/INSTALLATION DRAWING, 7521A SERIES**

SIZE **B**

CAGE CODE **2W033**

DWG NO

**127-7521A**

REV **C**

SCALE: 4:1

SOLIDWORKS

SHEET 1 of 1



**SPECIFICATIONS, SERIES 7521A ACCELEROMETER**

PERFORMANCE BY MODEL NUMBER

	<u>7521A1</u>	<u>7521A2</u>	<u>7521A3</u>	<u>7521A4</u>	<u>7521A5</u>	<u>7521A6</u>	<u>7521A7</u>	<b>UNITS</b>
Input Range	±2	±5	±15	±33	±50	±100	±225	g
Output, bias, ±10%	2.5	2.5	2.5	2.5	2.5	2.5	2.5	V
Output range	±1.1	±1.4	±1.4	±1.8	±1.8	±1.8	±1.8	V
Bandwidth, ±3 db	0-1500	0-1500	0-1500	0-400	0-400	0-400	0-400	Hz
Sensitivity, ±20%	550	280	93	55	36	18	8	mV/g
Output Noise (typical)	3	3	5	25	30	40	55	mGrms
Output Impedance	3500	3500	3500	500	500	500	500	Ω

PERFORMANCE FOR ALL MODEL NUMBERS

	<b>MIN</b>	<b>NOM</b>	<b>MAX</b>	<b>UNITS</b>
Maximum Mechanical Shock			4000	g peak
Resonance Frequency		5000		Hz
Transverse Sensitivity			2	%
Operating Temperature	-55		+257	°F
Compensated Temperature Range (CTR)	-20		+158	°F
Thermal Zero			0.0009	% FS/°F
Thermal Sensitivity Drift			0.0006	% FS/°F
Storage Temperature	-55		+302	°F
Non-Linearity			0.3	%
Excitation, regulated		4.8-5.2		VDC
Current consumption, nom		2		mA

PHYSICAL PARAMETERS FOR ALL MODEL NUMBERS

Case Material	anodized aluminum			
Cable Length	79			inch
Mounting Provision	two M2 screws (provided)			
	<b>MIN</b>	<b>NOM</b>	<b>MAX</b>	<b>UNITS</b>
Case Length		0.59		inch
Case Width		0.59		inch
Case Height		0.30		inch
Mounting Hole Spacing		0.59		inch
Mass			3.7	grams

NOTES:

SUPPLIED ACCESSORIES:

(2) Mounting Screws (Model 6722), M2 x 12 flathead