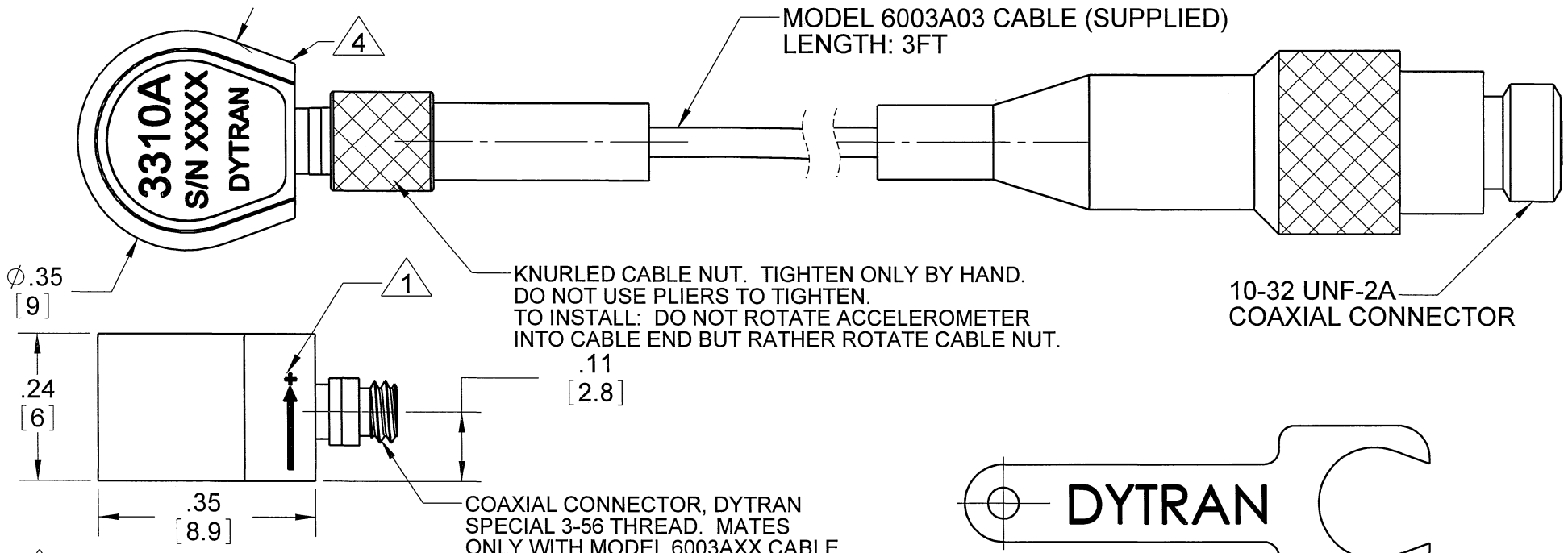


PROPRIETARY AND CONFIDENTIAL

THE INFORMATION CONTAINED IN THIS DRAWING IS THE SOLE PROPERTY OF DYTRAN INSTRUMENTS INC. ANY REPRODUCTION IN PART OR AS A WHOLE WITHOUT THE WRITTEN PERMISSION OF DYTRAN INSTRUMENTS INC. IS PROHIBITED

REVISIONS

REV	ECN	DESCRIPTION	BY/DATE	CHK	APPR
A	6785	INITIAL RELEASE	RA 05/22/10	JS	<i>[Signature]</i>



KNURLED CABLE NUT. TIGHTEN ONLY BY HAND. DO NOT USE PLIERS TO TIGHTEN. TO INSTALL: DO NOT ROTATE ACCELEROMETER INTO CABLE END BUT RATHER ROTATE CABLE NUT.

COAXIAL CONNECTOR, DYTRAN SPECIAL 3-56 THREAD. MATES ONLY WITH MODEL 6003AXX CABLE

REMOVAL TOOL. MODEL 6927
SCALE 2:1

- 4 ISOLATOR CUP: ANODIZED ALUMINUM. DIELECTRIC WITHSTANDING: <1mA AT 1000VDC FOR 60 SECONDS DWELL WITH 20 SECONDS RAMP RATE
- 3. CASE AND CONNECTOR MATERIAL: TITANIUM
- 2. WEIGHT LESS CABLE: 1.8 GRAMS APPROXIMATELY

1 ARROW INDICATES DIRECTION OF POSITIVE OUTPUT SIGNAL

NOTES: UNLESS OTHERWISE SPECIFIED

UNLESS OTHERWISE SPECIFIED:
 INTERPRET DIM & TOL PER ASME Y14.5M - 1994.
 REMOVE BURRS.
 COUNTERSINK INTERNAL THDS 90° TO MAJOR DIA.
 CHAM EXT THDS 45° TO MINOR DIA.
 THD LENGTHS AND DEPTHS ARE FOR MIN FULL THDS.
 THDS PER MIL-S-7742.
 DIMENSIONS APPLY AFTER FINISHING.

UNLESS OTHERWISE SPECIFIED:
 DIMENSIONS ARE IN INCHES. DIMENSIONS IN BRACKETS [] ARE IN MILLIMETERS
 TOLERANCES ARE:
 INCHES METRIC ANGLES
 .XX ± .03 .X ± 0.8 ± 1°
 .XXX ± .010 .XX ± 0.25

MATERIAL
 FINISH
 DO NOT SCALE DRAWING

ALL MACHINED SURFACES. TOTAL RUNOUT WITHIN .005. BREAK SHARP EDGES .005 TO .010. MACHINED FILLET RADII .005 TO .015. WELDING SYMBOLS PER AWS A2.4. ABBREVIATIONS PER MIL-STD-12.

CONTRACT NO.		APPROVALS		DATE
ORIG	RA	CHK	APP	05/22/10
		JS	<i>[Signature]</i>	05/24/10
				6/3/10

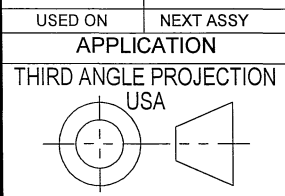
DYTRAN INSTRUMENTS, INC. Chatsworth, CA

MASTER ONLY IF IN RED

TITLE: **OUTLINE DRAWING, 3310A**

SIZE	CAGE CODE	DWG. NO.	REV
A	2W033	127-3310A	A

SCALE: 4:1 SOLIDWORKS SHEET 1 OF 1



MODEL NUMBER 3310A	PERFORMANCE SPECIFICATION	DOC NO. PS3310A
	CHARGE MODE ACCELEROMETER	REV B, ECN8362, 03/01/11



- MINIATURE SIZE
- REMOVABLE CABLE
- HERMETICALLY SEALED

This family also includes:

Model	Sensitivity (pC/psi)	Range (pC)	Resolution (Grms)	Oper. Temp(°F)

Please, refer to the performance specifications of the products in this family for detailed description.

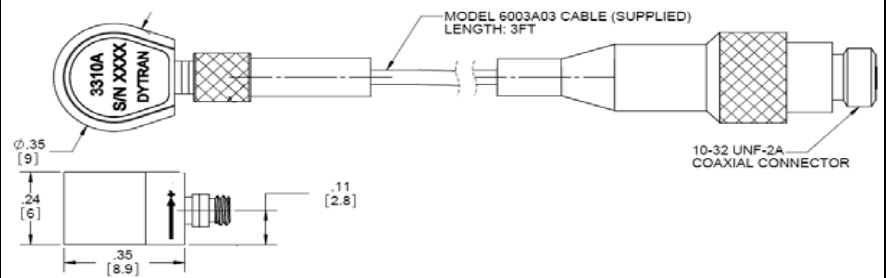
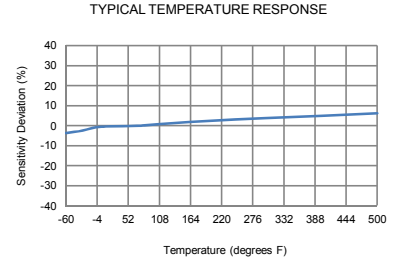
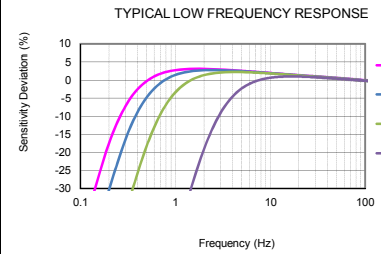
Supplied Accessories

- 1) Model 6927 installation wrench.
- 2) Accredited calibration certificate (ISO 17025)
- 3) Model 6003A03 removable cable.

Notes:

- [1] Flat mounting surface for adhesive mount.
- [2] Connector radially mounted. Connector mates only with Dytran cable model 6003XX. (XX is length in feet)
- [3] Measured at 100 Hz, 1 G RMS per ISA RP37.2.
- [4] Actual sensitivity is given on a calibration certificate traceable to NIST, supplied with each instrument.
- [5] Low frequency response is depended upon the discharge time constant of the charge amplifier.
- [6] Case grounded unit epoxied into anodized aluminum cup. Dielectric withstanding of <1mA at 1000VDC
- [7] In the interest of constant product improvement, we reserve the right to change specifications without notice.

	ENGLISH		SI	
PHYSICAL				
Weight	0.063	oz	1.8	grams
Mounting Provision	[1]		[1]	
Connector [2]	3-56 UNF-2A		3-56 UNF-2A	
Case Material	Titanium		Titanium	
Sensing Element Type	LiNbO ₃		LiNbO ₃	
PERFORMANCE				
Sensitivity [3] [4]	1.0 - 1.3	pC/g	0.10 - 0.13	pC / m/s ²
Range F.S	+/-3000	g/με	+/-29,430	m/s ²
Frequency Response, +/- 3dB	[5] to 20,000	Hz	[5] to 15,000	Hz
Frequency Response, +/- 10%	[5] to 10,000	Hz	[5] to 10,000	Hz
Frequency Response, +/- 5%	[5] to 7,000	Hz	[5] to 5,000	Hz
Mounted Resonant Frequency	>45	kHz	>45	kHz
Amplitude Non-Linearity	1	%F.S MAX	1	%F.S MAX
Transverse Sensitivity, Max	5	%	5	%
Strain Sensitivity @250/μσ	0.00012	g/με	0.0012	m/s ² /με
ENVIRONMENTAL				
Maximum Vibration	4000	g rms	39200	m/s ² rms
Maximum Shock	5000	g	49000	m/s ²
Temperature Range	-60 to +500	°F	-51 to +260	°C
Environmental Seal	Hermetic		Hermetic	
ELECTRICAL				
Output Signal Polarity	Positive		Positive	
Isolation	[6]		[6]	



Units on the line drawing are in inches, units in brackets are in millimeters. Refer to 127-3310A for more information.



21592 Marilla Street, Chatsworth, California 91311 Phone: 818.700.7818 Fax:818.700.7880
www.dytran.com For permission to reprint this content, please contact info@dytran.com