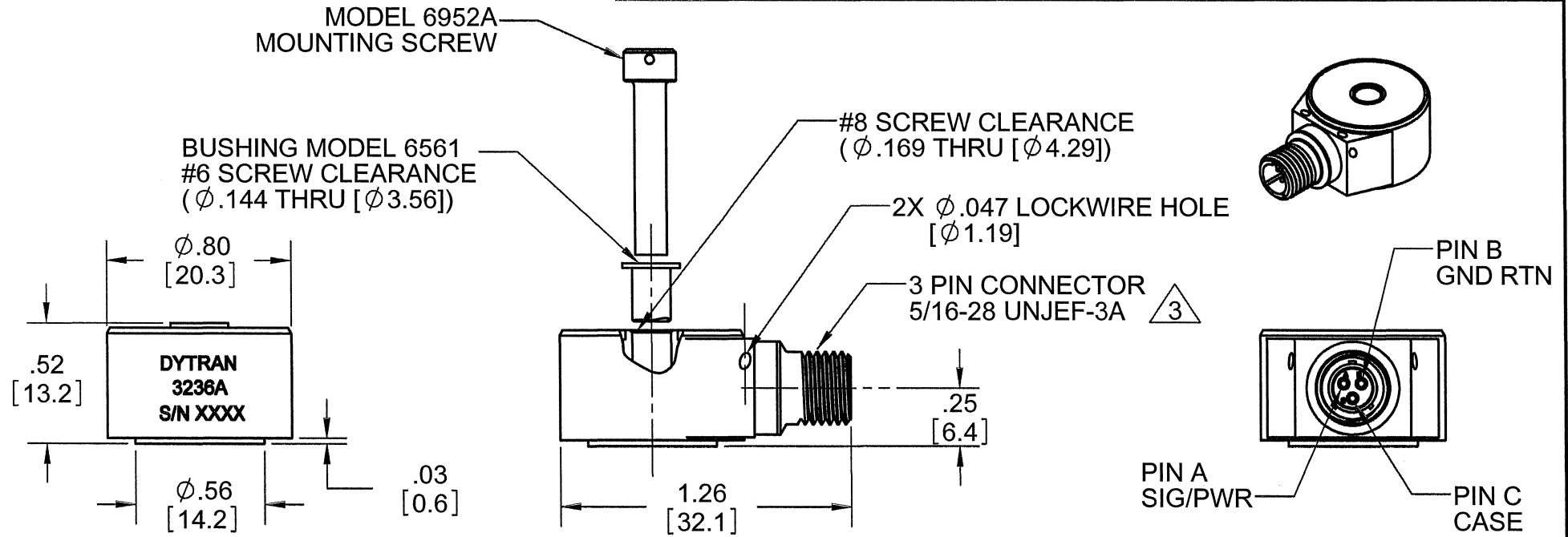


**PROPRIETARY AND CONFIDENTIAL**

THE INFORMATION CONTAINED IN THIS DRAWING IS THE SOLE PROPERTY OF DYTRAN INSTRUMENTS INC. ANY REPRODUCTION IN PART OR AS A WHOLE WITHOUT THE WRITTEN PERMISSION OF DYTRAN INSTRUMENTS, INC. IS PROHIBITED

**REVISIONS**

REV	ECN	DESCRIPTION	BY/DATE	CHK	APPR
B	7204	ADD MODEL 6952A	EP 11/12/10	<i>EP</i>	<i>ANS</i>



**3 MATING CONNECTOR GLENAIR**  
P/N 257-132-3S

- 2. MATERIAL: 304L STAINLESS STEEL
  - 1. WEIGHT 28.1 GRAMS +/- 0.7 GRAMS
- NOTES: UNLESS OTHERWISE SPECIFIED

**MOUNTING RECOMMENDATIONS:** PREPARE FLAT MOUNTING SURFACE  $\phi .60 [15.2]$  ( $\phi .50 [12.7]$  MIN), FLAT TO  $.001TIR$ . DRILL AND TAP 6-32 UNC-2B  $\nabla .300 [7.62]$  MIN. RECOMMENDED MOUNTING TORQUE: 12 LB IN  $+2/-0$  LB IN. FOR BEST FREQUENCY RESPONSE ACCELEROMETER MUST CONTACT MOUNTING SURFACE OVER ENTIRE MOUNTING SURFACE OF ACCELEROMETER

USED ON	NEXT ASSY
APPLICATION	
THIRD ANGLE PROJECTION USA	
<p>UNLESS OTHERWISE SPECIFIED: INTERPRET DIM &amp; TOL PER ASME Y14.5M - 1994. REMOVE BURRS. COUNTERSINK INTERNAL THDS 90° TO MAJOR DIA. CHAM EXT THDS 45° TO MINOR DIA. THD LENGTHS AND DEPTHS ARE FOR MIN FULL THDS. THDS PER MIL-S-7742. DIMENSIONS APPLY AFTER FINISHING.</p>	
<p>ALL MACHINED SURFACES TOTAL RUNOUT WITHIN .005. BREAK SHARP EDGES .005 TO .010. MACHINED FILLET RADII .005 TO .015. WELDING SYMBOLS PER AWS A2.4. ABBREVIATIONS PER MIL-STD-12.</p>	

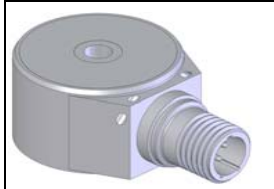
<p>UNLESS OTHERWISE SPECIFIED: DIMENSIONS ARE IN INCHES. DIMENSIONS IN BRACKETS [ ] ARE IN MILLIMETERS TOLERANCES ARE:</p>		
INCHES	METRIC	ANGLES
.XX ± .03	X ± 0.8	± 1°
.XXX ± .010	.XX ± 0.25	
MATERIAL		
FINISH		
DO NOT SCALE DRAWING		

CONTRACT NO.	
APPROVALS	
ORIG	EP 08/17/09
CHK	RA 09/10/09
APP	DV 09/10/09
APP	
DATE	

		<p><b>MASTER ONLY IF IN RED</b></p>	
TITLE:			
<p><b>OUTLINE/INSTALLATION DRAWING 3236A</b></p>			
SIZE	CAGE CODE	DWG. NO.	REV
<b>A</b>	<b>2W033</b>	<b>127-3236A</b>	<b>B</b>
SCALE: 2:1	SOLIDWORKS	SHEET 1 OF 1	

<b>MODEL NUMBER</b> <b>3236A</b>	<b>PERFORMANCE SPECIFICATION</b>	<b>DOC NO.</b> <b>PS3236A</b>
-------------------------------------	----------------------------------	----------------------------------

	<b>ACCELEROMETER, IEPE</b>	REV C, ECN 7931, 11/10/11
--	----------------------------	---------------------------



**Actual size**

- INTERNALLY CASE ISOLATED
- HERMETICALLY SEALED
- HIGH FREQUENCY

**PHYSICAL**

		ENGLISH			SI
Weight		0.98	oz		28.1
Mounting Provision		Thru Hole			Thru Hole
Connector [1]	Type	3 Pin			3 Pin
Material		304L			304L

**PERFORMANCE**

Sensitivity +/- 5% [2]		10	mV/g	1.02	mV/ m/s <sup>2</sup>
Range F.S. For ± 5 Volts Output		500	g pk	4900	m/s <sup>2</sup> pk
Frequency Range, ± 5%		1.2 to 10000	Hz	1.2 to 10000	Hz
Resonant Frequency, NOM		> 35	KHz	> 35	KHz
Equivalent Electrical Noise Floor		0.009	g rms	0.0882	m/s <sup>2</sup> rms
Linearity [3]		± 1	%F.S	± 1	%F.S
Transverse Sensitivity, Max.		5%		5%	
Strain Sensitivity @250µε		0.04	g/µε	0.04	g/µε
Spectral Noise					
	1 Hz	3000	µGrms/sqr(Hz)	29400	µm/s <sup>2</sup> rms/sqr(Hz)
	10Hz	700	µGrms/sqr(Hz)	6860	µm/s <sup>2</sup> rms/sqr(Hz)
	100Hz	200	µGrms/sqr(Hz)	1960	µm/s <sup>2</sup> rms/sqr(Hz)
	1000Hz	100	µGrms/sqr(Hz)	980	µm/s <sup>2</sup> rms/sqr(Hz)
	10000Hz	90	µGrms/sqr(Hz)	882	µm/s <sup>2</sup> rms/sqr(Hz)

**ENVIRONMENTAL**

Maximum Vibration		5000	±gpk	49000	± m/s <sup>2</sup> pk
Maximum Shock		10000	±gpk	98000	± m/s <sup>2</sup> pk
Temperature Range		-60 to +300	°F	-55 to +149	°C
Seal		Hermetic		Hermetic	
Coefficient Of Thermal Sensitivity		0.02	%/°F	0.02	%/°C

**ELECTRICAL**

Supply Current [4]		2 to 20	mA	2 to 20	mA
Compliance Voltage Range		18 to +30	V	18 to +30	V
Output Impedance TYP		150	Ω	150	Ω
Bias Voltage		+7.5 to +9.5	VDC	+7.5 to +9.5	VDC
Discharge Time Constant		0.4 to 1.0	sec	0.4 to 1.0	sec
Output Signal Polarity [5]		positive		positive	
Electrical Isolation [6]		10	GΩ	10	GΩ

**This family also includes:**

Model	Sensitivity (mV/g)	Range (Gpeak)	Resolution (Grms)	Oper. Temp(°F)	TC

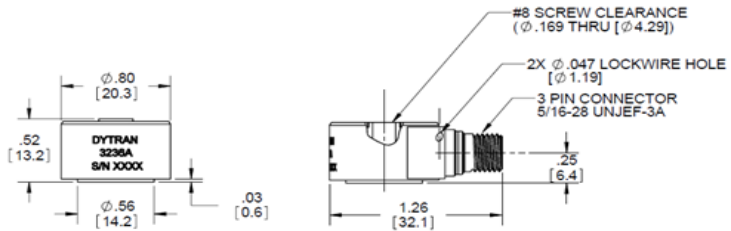
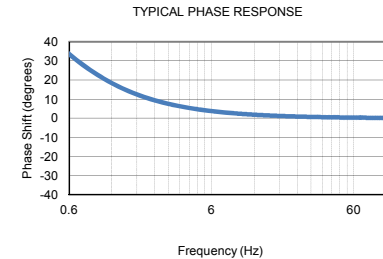
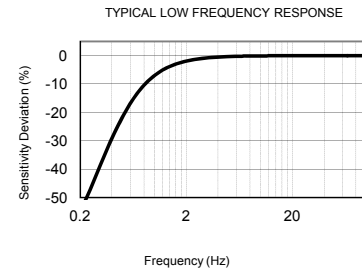
Please, refer to the performance specifications of the products in this family for detailed description.

**Supplied Accessories:**

- 1) Model 6561 Bushing for #6 screw
- 2) Model 6952A mounting screw 6-32
- 3) Accredited Calibration Certificate (ISO 17025)

**Notes:**

- [1] Mating connector Glenair P/N 257-132-3S
- [2] Measured at 100 Hz, 1 gram per ISA RP 37.2.
- [3] Measured using zero-based best straight-line method, % of F.S. or any lesser range.
- [4] Do not apply power to this device without current limiting, 20 mA MAX. To do so will destroy the integral IC amplifier
- [5] For acceleration perpendicular and away from the mounting surface
- [6] Electrical ground isolated from sensor case.
- [7] In the interest of constant product improvement, we reserve the right to change the specification without notice.



Units on the line drawing are in inches, units in brackets are in millimeters. Refer to 127-3236A for more information.



21592 Marilla Street, Chatsworth, California 91311 Phone: 818.700.7818 Fax: 818.700.7880 www.dytran.com  
For permission to reprint this content, please contact info@dytran.com