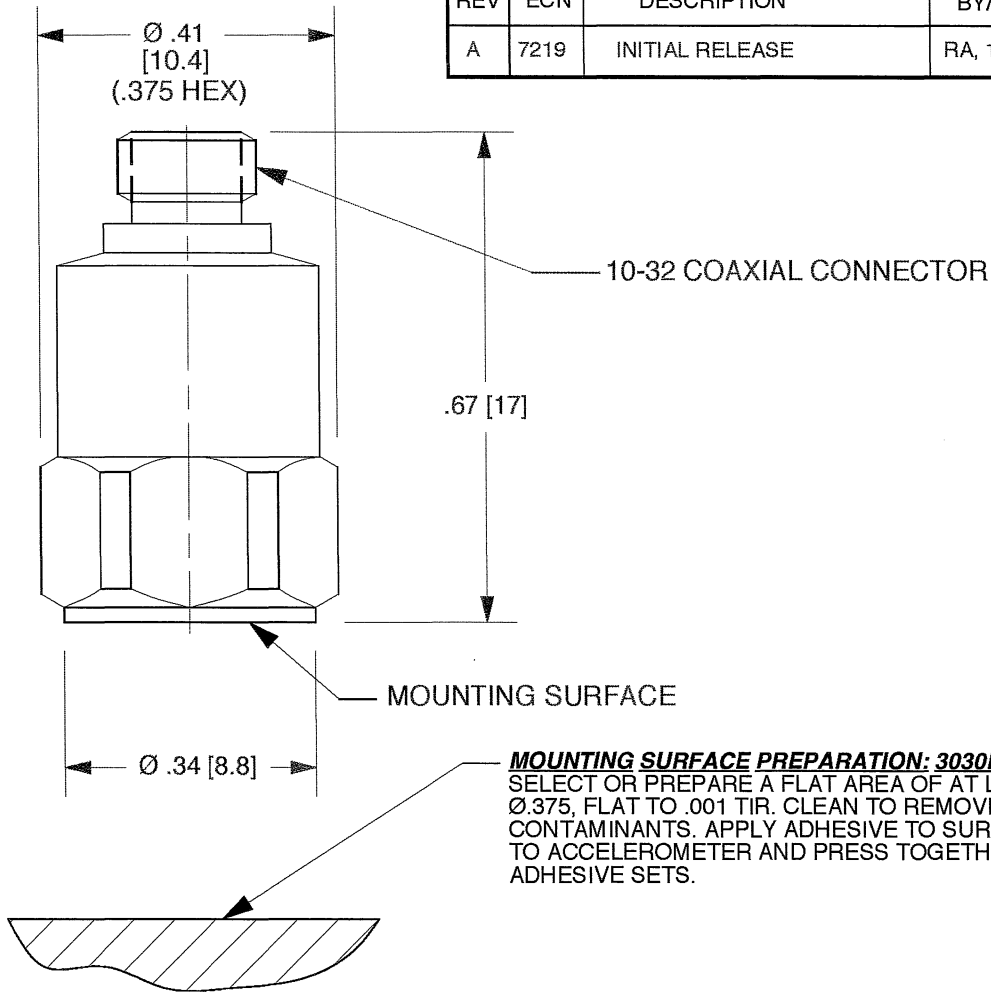


DYTRAN PROPRIETARY AND CONFIDENTIAL

THE INFORMATION CONTAINED IN THIS DRAWING IS THE SOLE PROPERTY OF DYTRAN INSTRUMENTS, INC. AND ANY REPRODUCTION IN PART OR AS A WHOLE OR ANY OTHER DISSEMINATION OF THIS INFORMATION WITHOUT THE WRITTEN PERMISSION OF DYTRAN INSTRUMENTS, INC. IS PROHIBITED.

MODEL	SENSITIVITY
3030B4G	10 mV/g
3030B5G	10 mV/g

REV	ECN	DESCRIPTION	BY/DATE	CHK	APPR
A	7219	INITIAL RELEASE	RA, 11/19/10	98	98



- 2. MATERIAL: HOUSING & CONNECTOR - 316L STAINLESS STEEL.
- 1. WEIGHT - 6.8 GRAMS APPROX

NOTES: UNLESS OTHERWISE SPECIFIED

USED ON	NEXT ASSY
APPLICATION	
THIRD ANGLE PROJECTION USA	

UNLESS OTHERWISE SPECIFIED:
 INTERPRET DIM & TOL PER ASME Y14.5M-1994. REMOVE BURRS
 COUNTERSINKS INTERNAL THDS 90° TO MAJOR DIA CHAM EXT THDS 45° TO MAJOR DIA. THD LENGTHS AND DEPTHS ARE FOR THDS PER MIL-S-7742.
 DIMENSIONS APPLY AFTER FINISHING.

63
 ALL MACHINED SURFACES TOTAL RUNOUT WITHIN .005 BREAK SHARP EDGES .005 TO .010 MACHINE FILLET RADI .005 TO .015. WELDING SYMBOLS PER AWS A2.4 ABBREVIATIONS PER MIL-STD-12

CONTRACT NO

UNLESS OTHERWISE SPECIFIED DIMENSIONS ARE IN INCHES. DIMENSION IN BRACKETS [] ARE IN MILLIMETERS.
 TOLERANCES ARE:
 INCHES METRIC ANGLES
 .XX ±.03 .X ± 0.8 ± 1°
 .XXX ±.010 .XX ± 0.25

FINISH

DO NOT SCALE DRAWING

MASTER ONLY IF IN RED

CHATSORTH, CA.

SCALE 4X	DESIGN NC	DATE 12/7/95			
DRAWN NC	DATE 11/19/10	PART NO. -			
CHECKED - 98	DATE 11-19-10	MAT'L -			REV A
APPROVED 98	DATE 11/22/10	NEXT ASSEMBLY -	USED ON		
TITLE			DWG NO.		
OUTLINE/INSTALLATION DRAWING, MODEL SERIES 3030BG			127-3030BG		
			SHEET 1 OF 1		

Model Number 3030B4G	PERFORMANCE SPECIFICATION	DOC NO PS3030B4G
MINIATURE IEPE ACCELEROMETER		REV A. ECN 7503. 04/27/11



- MINIATURE SIZE
- EXCELLENT LINEARITY
- HERMETICALLY SEALED

PHYSICAL

Weight
Size
Connector
Mounting Provision
Material
Element Style

Hex x Height
Top Mounted
Accelerometer and Connector

ENGLISH		SI	
0.24	oz	6.8	grams
0.375 x 0.67	Inches	9.525 x 17.01	mm
10-32 Micro Coax		10-32 Micro Coax	
Adhesive Mount		Adhesive Mount	
304L		304L	
Quartz Shear		Quartz Shear	

PERFORMANCE

Sensitivity, ±5% [1]
Range F.S for ± 5 Volts Output
Frequency Response, ±5%
Resonant Frequency, Nom
Equivalent Electrical Noise Floor
Linearity [2]
Maximum Transverse sensitivity
Strain Sensitivity @ 250µε

10	mV/g	1	mV/m/s ²
±500	g	±4905	m/s ²
2 to 10000	Hz	2 to 10000	Hz
30	kHz	30	kHz
0.0036	Grms	0.035	m/s ² rms
± 1%	% F.S.	± 1%	% F.S.
5	%	5	%
0.003	g/µε	0.03	m/s ² /µε

ENVIRONMENTAL

Maximum Vibration
Maximum Shock
Temperature Range
Seal, Hermetic

±1000	Gpeak	±9810	m/s ² peak
±3000	Gpeak	±29430	m/s ² peak
-60 to +250	*F	-51 to +121	*C
Welded/Glass To Metal		Welded/Glass To Metal	

ELECTRICAL

Supply Current Range [3]
Compliance Voltage Range
Output Impedence, Typ
Bias Voltage
Discharge Time Constant

2 to 20	mA	2 to 20	mA
+ 18 to +30	Volts	+ 18 to +30	Volts
100	Ω	100	Ω
7.5 to 11	VDC	7.5 to 11	VDC
0.5 to 1	Sec	0.5 to 1	Sec

This family also includes:

Model	Sensitivity (mV/g)	Frequency Response (Hz)	Time Constant (Sec)	Operating Temp (°F)
3030B5G	10	5 to 10000	0.1 to 0.15	-60 to +250

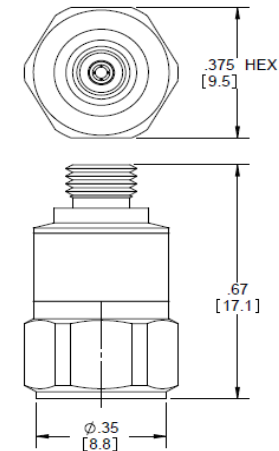
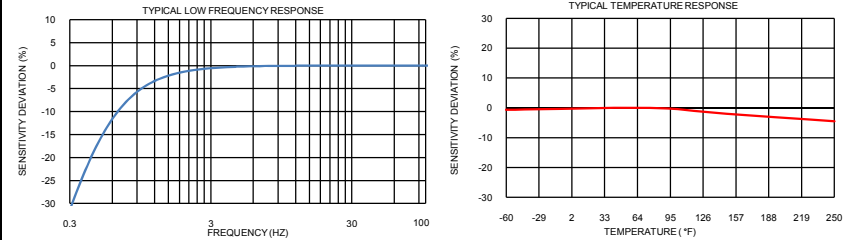
Refer to the performance specifications of the products in this family for detailed description.

Supplied Accessories:

- 1) Accredited calibration certificate (ISO 17025)

Notes:

- [1] Measure at 100Hz, 1 Grms per ISA RP 37.2
- [2] Measure using zero-based straight line method, percentage of F.S. or any lesser range.
- [3] Do not apply power to this system without current limiting, 20 mA MAX. To do so will destroy the IC charge amplifier.
- [4] In the interest of constant product improvement, we reserve the right to change specifications without notice.



Units on the line drawing are in inches. Refer to 127-3030BG for more information.



21592 Marilla Street, Chatsworth, California 91311 Phone: 818.700.7818 Fax: 818.700.7880 www.dytran.com
For permission to reprint this content, please contact info@dytran.com