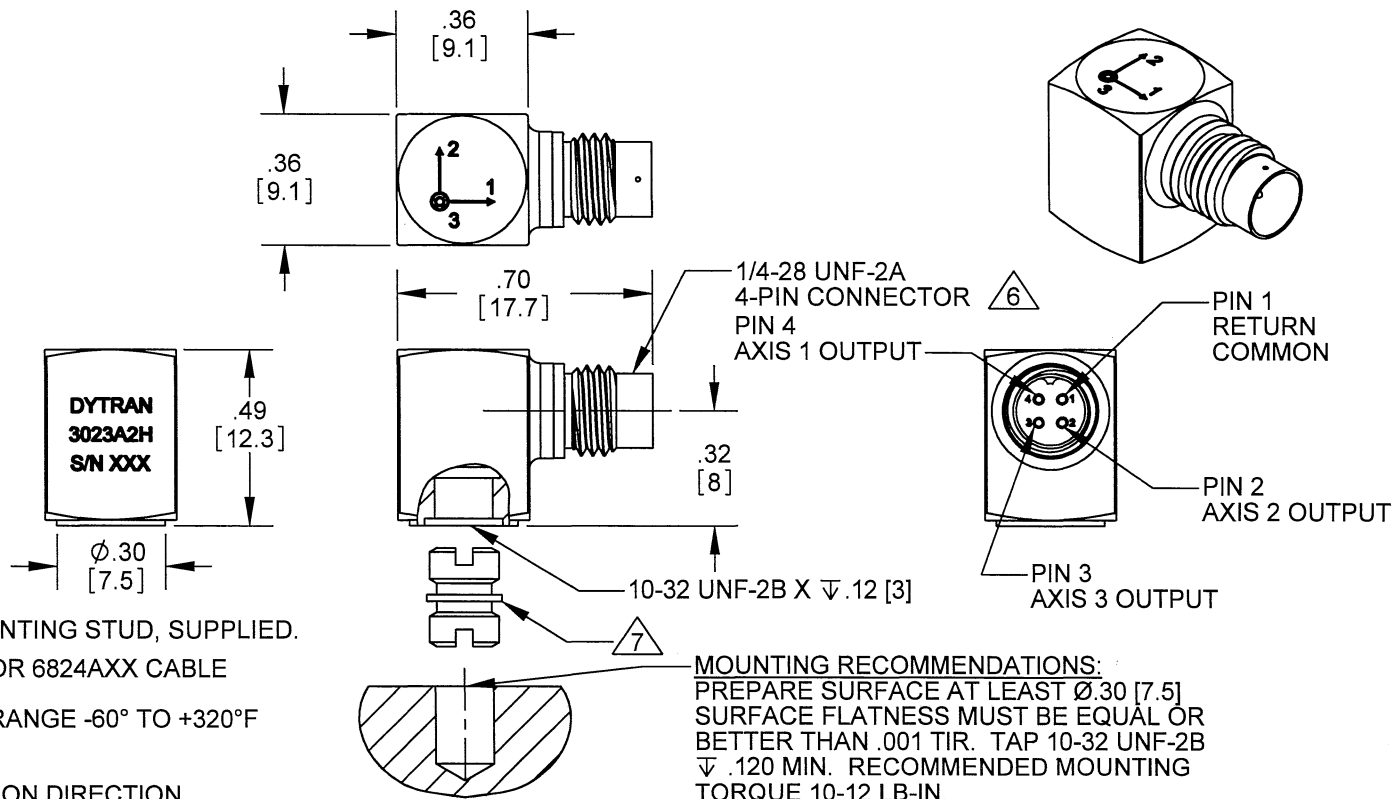


PROPRIETARY AND CONFIDENTIAL

THE INFORMATION CONTAINED IN THIS DRAWING IS THE SOLE PROPERTY OF DYTRAN INSTRUMENTS INC. ANY REPRODUCTION IN PART OR AS A WHOLE WITHOUT THE WRITTEN PERMISSION OF DYTRAN INSTRUMENTS INC. IS PROHIBITED

REVISIONS

REV.	ECN	DESCRIPTION	BY/DATE	CHK	APPR
B	6250	ADDED NOTE 6, 7 AND REFORMATTED	RA, 12/04/09	SP	[Signature]



- 7 MODEL 6200, 10-32 UNF-2A MOUNTING STUD, SUPPLIED.
- 6 MATES WITH DYTRAN 6811AXX OR 6824AXX CABLE (XX=LENGTH IN FEET)
- 5. OPERATIONAL TEMPERATURE: RANGE -60° TO +320°F
- 4. SENSITIVITY: 10mV/G NOMINAL
- 3. WEIGHT: 4 GRAMS NOM
- 2. ARROWS INDICATE ACCELERATION DIRECTION FOR POSITIVE OUTPUT
- 1. MATERIAL: TITANIUM ALLOY

**MOUNTING RECOMMENDATIONS:**  
 PREPARE SURFACE AT LEAST Ø.30 [7.5]  
 SURFACE FLATNESS MUST BE EQUAL OR BETTER THAN .001 TIR. TAP 10-32 UNF-2B X .120 MIN. RECOMMENDED MOUNTING TORQUE 10-12 LB-IN.

NOTES: UNLESS OTHERWISE SPECIFIED.

CONTRACT NO.



TITLE:  
**OUTLINE/INSTALLATION  
 DRAWING, 3023A2H**

APPROVALS		DATE
ORIG	PML	04/04/07
CHK	DV	08/13/08
APP	ANS	08/14/08
APP		

SIZE <b>A</b>	CAGE CODE <b>2W033</b>	DWG. NO. <b>127-3023A2H</b>	REV <b>B</b>
SCALE: NONE		SOLIDWORKS	SHEET 1 OF 1

USED ON

NEXT ASSY

APPLICATION

THIRD ANGLE PROJECTION  
 USA

UNLESS OTHERWISE SPECIFIED:  
 INTERPRET DIM & TOL PER ASME Y14.5M - 1994.  
 REMOVE BURRS.  
 COUNTERSINK INTERNAL THDS 90° TO MAJOR DIA.  
 CHAM EXT THDS 45° TO MINOR DIA.  
 THD LENGTHS AND DEPTHS ARE FOR MIN FULL THDS.  
 THDS PER MIL-S-7742.  
 DIMENSIONS APPLY AFTER FINISHING.  
 ALL MACHINED SURFACES.  
 TOTAL RUNOUT WITHIN .005.  
 BREAK SHARP EDGES .005 TO .010.  
 MACHINED FILLET RADII .005 TO .015.  
 WELDING SYMBOLS PER AWS A2.4.  
 ABBREVIATIONS PER MIL-STD-12.

UNLESS OTHERWISE SPECIFIED:  
 DIMENSIONS ARE IN INCHES. DIMENSIONS IN BRACKETS [ ] ARE IN MILLIMETERS  
 TOLERANCES ARE:  
 INCHES METRIC ANGLES  
 .XX ± .03 .X ± 0.8 ± 1°  
 .XXX ± .010 .XX ± 0.25

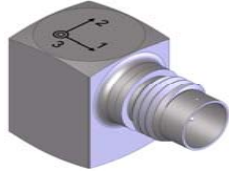
MATERIAL

FINISH

DO NOT SCALE DRAWING

<b>MODEL NUMBER</b> <b>3023A2H</b>	<b>PERFORMANCE SPECIFICATION</b>	<b>DOC NO.</b> <b>PS3023A2H</b>
---------------------------------------	----------------------------------	------------------------------------

ACCELEROMETER, TRIAXIAL, IEPE	REV C, ECN7023, 08/21/10
-------------------------------	--------------------------



- **HIGH TEMPERATURE**
- **HERMETICALLY SEALED**
- **MINIATURE SIZE**

**PHYSICAL**

Weight  
Mounting  
Connector [1]  
Material, Housing / Connector

ENGLISH		SI	
0.14	oz	4.0	grams
10-32 Tapped Hole		10-32 Tapped Hole	
4-pin		4-pin	
Titanium		Titanium	

**PERFORMANCE**

Sensitivity, -10 + 15% [2]  
Range F.S. (each axis)  
Frequency Response, +/-10%

	ENGLISH	SI	ENGLISH	SI
Sensitivity	10	mV/g	1.02	mV/m/s <sup>2</sup>
Range F.S. (each axis)	±500	g	4900.00	m/s <sup>2</sup>
Frequency Response, +/-10%	1-Axis	2 to 5000	Hz	2 to 5000
	2-Axis	2 to 5000	Hz	2 to 5000
	3-Axis	2 to 10000	Hz	2 to 10000
Element Natural Frequency	1-Axis	20	kHz	20
	2-Axis	25	kHz	25
	3-Axis	30	kHz	30
Equivalent Electrical Noise	0.007	grms	0.0686	m/s <sup>2</sup> rms
Linearity [3]	1	%F.S.	1	%F.S.
Transverse Sensitivity Max	6	%	6	%
Signal Polarity	[5]		[5]	

**ELECTRICAL**

Supply Current Range [4]  
Compliance Voltage Range  
Output Impedance, Typ.  
Output Bias Voltage  
Discharge Time Constant, Nom.  
Ground Isolation

ENGLISH	SI
2 to 20	mA
+18 to +30	VDC
100	Ω
7 to 9	VDC
0.2 - 0.4	sec
Case Ground	Case Ground

**ENVIRONMENTAL**

Maximum Shock  
Maximum Vibration  
Temperature Range  
Environmental Seal  
Coefficient of Thermal Sensitivity

ENGLISH	SI
5000	g pk
±600	g pk
-60 to +320	°F
Hermetic	Hermetic
0.015	% / °F
	0.015
	% / °C

**This family also includes:**

Model	Sensitivity (mV/g)	Range (Gpeak)	Resolution (Grms)	Oper. Temp(°F)	TC

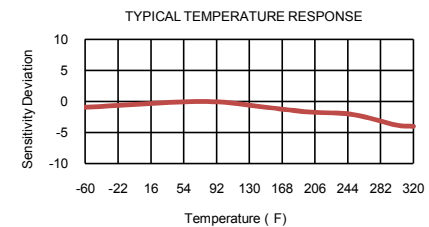
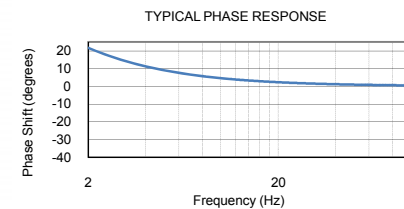
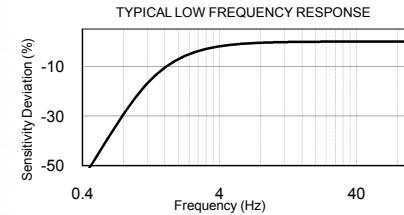
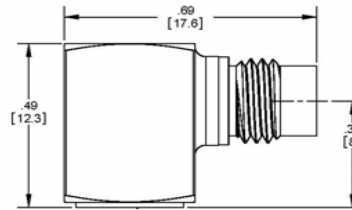
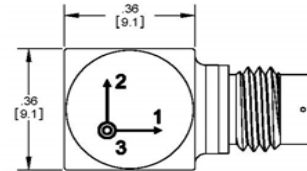
Please, refer to the performance specifications of the products in this family for detailed description

**Supplied Accessories:**

- 1) Accredited Calibration Certificate (ISO 17025)
- 2) Model 6200 Mounting Stud, Qty 1.

**Notes:**

- [1] Connector mates with Dytran's cable assy. Model 6811AXX. (xx = length in feet)
  - [2] Measured At 100 Hz, 1 Grms per ISA RP 37.2
  - [3] Measured using zero-based best straight-line method, % of F.S. or any lesser range.
  - [4] Power only with Dytran IEPE power unit or other Dytran-compatible constant current type power unit. If power is applied without current limiting protection, the internal amplifier will be destroyed.
  - [5] Positive for motion in direction of arrows on housing.
- [4] In the interest of constant product improvement, we reserve the right to change the specification without notice.



Units on the line drawing are in inches, units in brackets are in millimeters. Refer to 127-3023A2H for more information.

