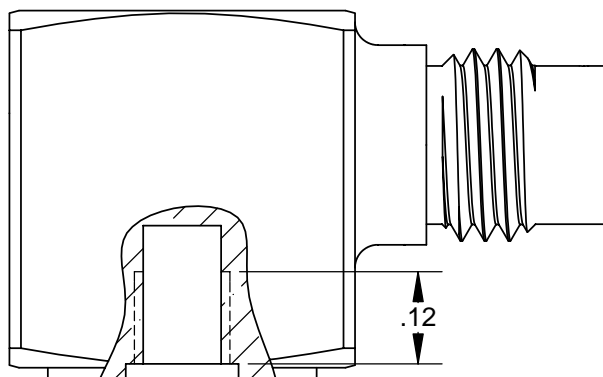
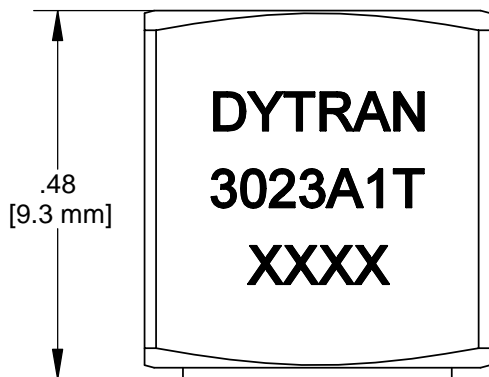
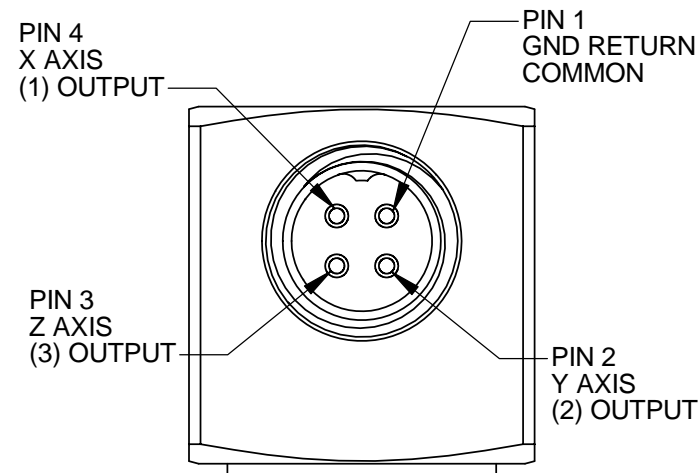


1/4-28 CONNECTOR



5-40 UNC-2B
TAPPED HOLE



5. TEDS COMPATIBLE PER IEEE 1451.4
4. SENSITIVITY: 10mV/g NOM.
3. WEIGHT: 6.2 GRAMS NOM.
2. ARROWS INDICATE ACCELERATION DIRECTION FOR POSITIVE OUTPUT.
1. MATERIAL: TITANIUM ALLOY

DYTRAN
INSTRUMENTS, INC.

CHATSWORTH, CA

SCALE	4:1	REV	-	DATE	-	ECN	-
DATE	5/22/2006	PART NO.					
DRAWN	CHECKED	MATERIAL					
APPROVED	NEXT ASSEMBLY				USED ON		
TITLE						DWG NO.	
OUTLINE DRAWING, 3023A1T TRIAxIAL ACCELEROMETER, TEDS						127-3023A1T	
SHEET 1 OF 1							



SPECIFICATIONS, MODEL 3023A1T TRIAXIAL ACCELEROMETER WITH TEDS

SPECIFICATIONS	VALUE	UNITS
PHYSICAL		
WEIGHT	6.2	grams
SIZE (HEIGHT x WIDTH x DEPTH)	0.45 x .45 x .48	inches
MOUNTING	INTERNAL 5-40 THREAD	
CONNECTOR	4-PIN [1]	
MATERIAL, HOUSING/CONNECTOR	TITANIUM ALLOY	
PERFORMANCE		
SENSITIVITY, -10 +15% [2]	10.0	mV/g
RANGE, F.S. (each axis)	+/- 500	g
FREQUENCY RESPONSE, -5 / +15%	1.5 to 10000	Hz
ELEMENT NATURAL FREQUENCY, NOM.	40	kHz
EQUIVALENT ELECTRICAL NOISE	.0095	grms
LINEARITY, MAX [3]	1	% FS
TRANSVERSE SENSITIVITY, MAX	5	%
SIGNAL POLARITY	POSITIVE FOR MOTION IN DIRECTION OF ARROWS ON HOUSING	
ENVIRONMENTAL		
MAXIMUM VIBRATION	+/- 600	gpk
MAXIMUM SHOCK	5000	gpk
TEMPERATURE RANGE	-60 to +250	°F
ENVIRONMENTAL SEAL	HERMETIC	
COEFFICIENT OF THERMAL SENSITIVITY	.03	%/°F
ELECTRICAL		
SUPPLY CURRENT RANGE, (each axis) [4]	2-to 20	mA
COMPLIANCE (SUPPLY) VOLTAGE RANGE (each axis)	+18 to +30	VDC
OUTPUT IMPEDANCE, TYP.	100	Ohms
OUTPUT BIAS VOLTAGE, NOM.	+10	VDC
DISCHARGE TIME CONSTANT, NOM.	0.3	sec
GROUND ISOLATION	CASE GROUNDED	
IEPE SENSOR WITH TEDS FEATURE	PER IEEE 1451.4	

[1] Connector mates with Dytran cable assy. Model 6811Axx. (xx = length in feet)

[2] Reference sensitivity measured at 100 Hz, 1 grms per ISA RP 37.2

[3] Linearity is % of specified full scale (or any lesser full scale range), zero-based best fit straight line method.

[4] Power only with IEPE power unit or other Dytran-compatible constant current type power unit. If power is applied without current limiting protection, the internal amplifier will be immediately destroyed.